

edge[®]

pH • EC • DO



INSTRUCTION MANUAL

**Dear
Customer,**

Thank you for choosing a Hanna Instruments product.

Please read this instruction manual carefully before using the instrument.

This manual will provide you with the necessary information for correct use of the instrument, as well as a precise idea of its versatility.

If you need additional technical information, do not hesitate to e-mail us at tech@hannainst.com or view our worldwide contact list at www.hannainst.com.

All rights are reserved. Reproduction in whole or in part is prohibited without the written consent of the copyright owner, Hanna Instruments Inc., Woonsocket, Rhode Island, 02895, USA.

Included	5
Safety Measures	5
Description	6
Diagram	6
Product Diagram	6
Probe Diagram	8
Keypad Function	9
Guide to Indicators	10
Setup/Installation	11
Setting Up edge [®]	11
Electrode & Probe Connections	14
General Setup	15
Basic Mode	17
Logging Function	17
Viewing Logged Data	20
PC & Storage Interface	23
Operational Guide	25
Basic vs Standard pH Mode	25
pH Meter Configurations	26
pH Calibration	27
Calibration Messages	34
pH GLP Information	36
pH Measurement	38
Basic vs Standard EC Mode	39
EC Meter Configuration	40
EC/TDS Calibration	43
NaCl % Calibration	45
Calibration Messages	46
EC/TDS GLP Information	47
NaCl % GLP Information	49
EC/TDS Measurements	50
Salinity Measurements	52
Dissolved Oxygen Setup	54
Dissolved Oxygen Probe Diagram	55

Dissolved Oxygen Meter Configuration	56
Dissolved Oxygen Calibration	58
Dissolved Oxygen Calibration Messages	59
Dissolved Oxygen GLP Information	59
Dissolved Oxygen Measurements	61
Maintenance	62
pH Probe Maintenance	62
EC Probe Maintenance	64
Dissolved Oxygen Probe Maintenance	65
Troubleshooting Guide	67
Specifications	69
Accessories	72

Remove the instrument from the packing material and examine it carefully to make sure that no damage has occurred during shipping. If there is any damage, please contact your local Hanna Instruments Office.

Each instrument **edge®** (pH, EC, DO) is supplied with:

- Bench cradle
- Wall cradle
- Electrode holder
- USB cable
- 5 Vdc Power Adapter
- Instruction Manual
- Quality Certificate

Model Specific Components include:

HI2020 (pH)	HI2030 (EC)	HI2040 (DO)
HI11310: Digital pH Electrode with integrated temperature sensor	HI763100: Digital 4 ring conductivity probe with integrated temperature sensor	HI764080: Digital polarographic dissolved oxygen probe with integrated temperature sensor
pH Calibration Solution Kit	Conductivity Calibration Solution Kit	HI7041S Electrolyte for DO probe
		2 DO membrane caps for HI764080 DO probe
		2 replacement O-Rings for membrane caps
		Electrode protective cap

Note: Save all packing material until you are sure that the instrument works correctly. Any defective item must be returned in its original packing.

Before using this product, make sure that it is entirely suitable for your specific application and for the environment in which it is used.

Operation of this instrument may cause interference to other electronic equipment, requiring the operator to take steps to correct interference. Any variation introduced by the user to the supplied equipment may degrade the instrument's EMC performance.

To avoid damages or burns, do not put the instrument in microwave ovens. For your and the instrument's safety, do not use or store the instrument in hazardous environments.

edge® enables the user to make fast, accurate measurements of commonly measured laboratory parameters using one of the Hanna Instruments edge® digital sensors for pH, Conductivity or Dissolved Oxygen. Each digital sensors has a unique serial number and the parameter that it measures is automatically identified by the meter. Once connected to the meter, the sensor(s) are ready to measure their parameter along with temperature.

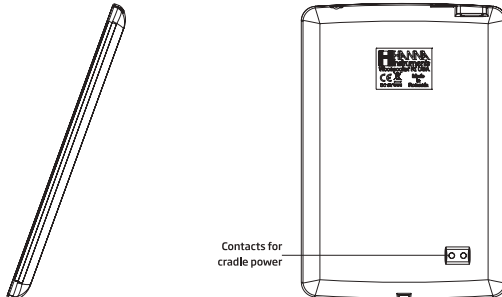
The user interface permits you to adapt edge® to your exact measurement requirements. The intuitive design simplifies configuration, calibration, measurement, data logging and transfer of data to a USB thumb drive or computer. edge® also offers a basic operation mode that streamlines measurement configuration and is useful for many routine applications. (Every feature and measurement detail is designed to give you an edge in measurement technology.)

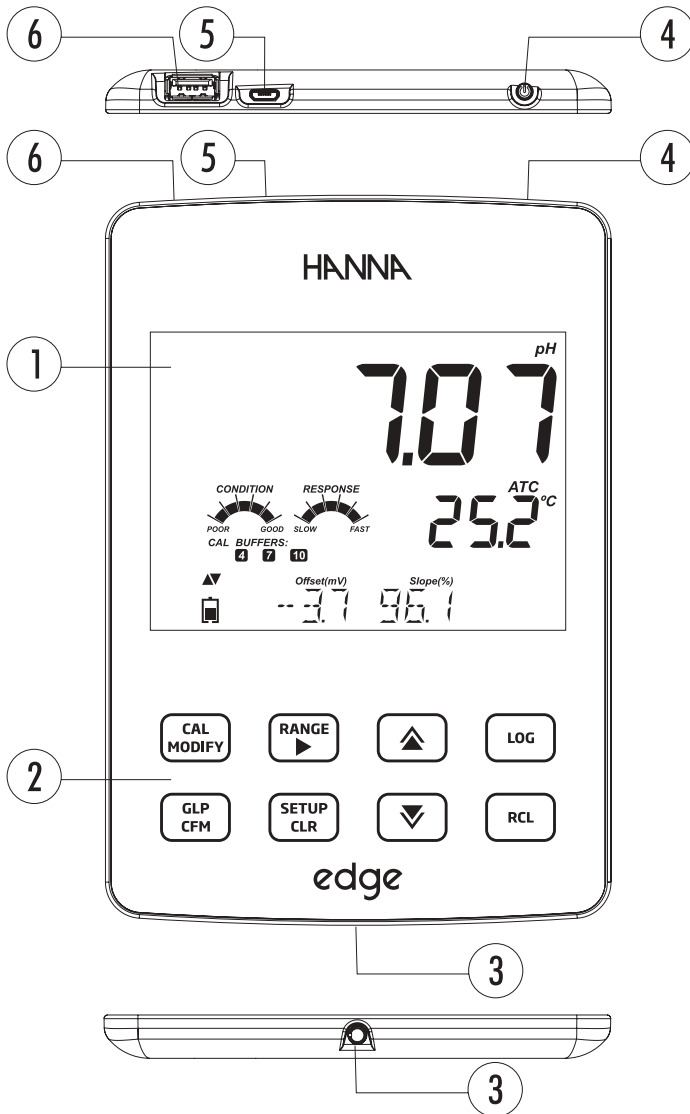
edge® is versatile in many ways. The slim meter and probe can be used as a portable device (using its rechargeable battery) or used in its bench or wall cradles (that also power the meter) as a line-powered laboratory instrument.

PRODUCT DIAGRAM

- Sleek, clean, intuitive design
- Internal clock and date
- Adjustable resolution for pH and EC measurements
- Auto parameter recognition
- Dedicated GLP key
- GLP data included with logged data
- Basic mode for simplified operation
- Simplified data transfer to a PC
- Up to 8 hour battery life when used as a portable device

Side & Back view

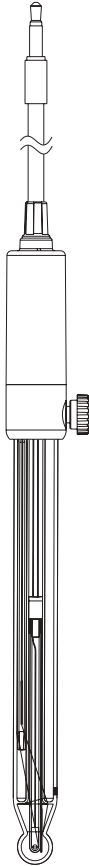




- | | |
|--|--|
| <ul style="list-style-type: none"> 1. Liquid Crystal Display (LCD) 2. Capacitive Touch Keypad 3. 3 mm jack input for <i>edge</i>[®] digital probes 4. Top mounted ON/OFF button | <ul style="list-style-type: none"> 5. Micro USB device connection for power or PC interface 6. Standard USB host connection for data transfer to a USB thumb-drive |
|--|--|

PROBE DIAGRAM

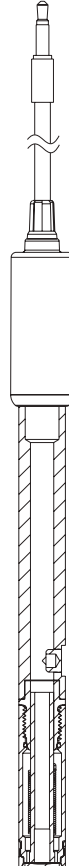
Probes



pH Electrode



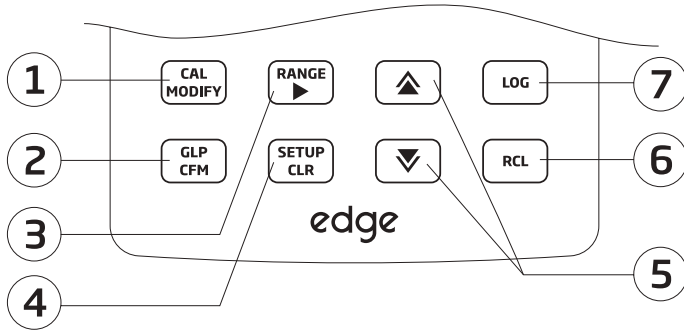
EC Electrode



DO Electrode

- Probes process signal directly for noise free measurements
- Auto sensor recognition
- Store calibration specific data from the last calibration
- Are built with materials suitable for use in chemical analysis
- Have integrated temperature measurement
- Incorporate a 3 mm jack termination
- Unique serial ID in every probe for traceability

KEYPAD FUNCTION



1. **CAL/MODIFY** - Used to enter and exit calibration mode. In SETUP, used to initiate changes of a configuration setting.
2. **GLP/CFM** - Used to display GLP calibration information. In SETUP, used to confirm change made. In calibration, used to accept calibration points.
3. **RANGE/▶** - Used to select measurement range. In SETUP, used to move to right in pick list. In log RCL, used to view GLP data for a data point.
4. **SETUP/CLR** - Used to enter/exit SETUP mode. During calibration, used to clear previous calibration data. In log RCL, used to clear log records.
5. **▼/▲** - Used to scroll through SETUP menu. Used to change selection when modifying a parameter in SETUP.
6. **RCL (Recall)** - Used to view logged records or view % log memory used.
7. **LOG** - Used to log data by manual log on demand or manual log on stability or to start/stop interval logging.

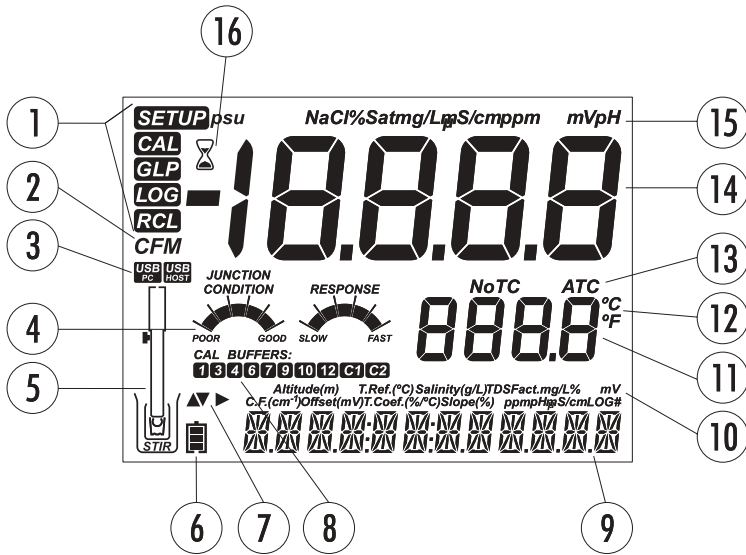
Note: You can increase/decrease the speed to change the value of a parameter.

Proceed as follows:

Press and hold down the ▲ or ▼ key, then slide the finger toward the double apex to increase the speed that a value changes.



GUIDE TO INDICATORS



- | | |
|--|---|
| <ol style="list-style-type: none"> 1. Mode tags 2. Confirm tag 3. USB connection status 4. pH electrode diagnostics 5. Probes symbol 6. Battery symbol 7. Arrow tags, displayed when they are available 8. pH calibration buffers used | <ol style="list-style-type: none"> 9. Third LCD line, message area 10. Labels 11. Second LCD line, temperature measurement 12. Temperature units 13. Temp. Compensation status 14. Measurement line 15. Measurement units 16. Stability Indicator |
|--|---|

The third line of the LCD (9) is a dedicated message line. During measurement the user may use the \blacktriangle \blacktriangledown keys to select desired message. Options include date, time, calibration data, battery charge or no message. If a measurement error or log status change occurs during measurement, the third line will display a pertinent message.

SETTING UP edge®

The main operating modes of edge® are setup, calibration, measurement, data logging, and data export. Follow this general outline of steps to get you started. The following topics are expanded upon in the sections that follow in this manual.

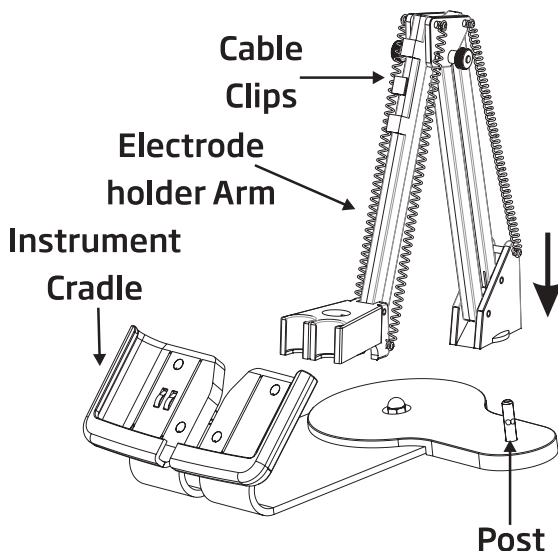
1. Familiarize yourself with the design features of this unique meter.
2. Decide how the meter will be used and set up the wall or bench cradle in a clean area near line power.
3. Turn edge® on using the ON/OFF button located on the top of the meter.
4. Plug in the probe required for measurement.
5. SETUP the measurement parameters required for the measurement you will be making.
6. Calibrate the sensor/probe.

You are now ready for measurements.

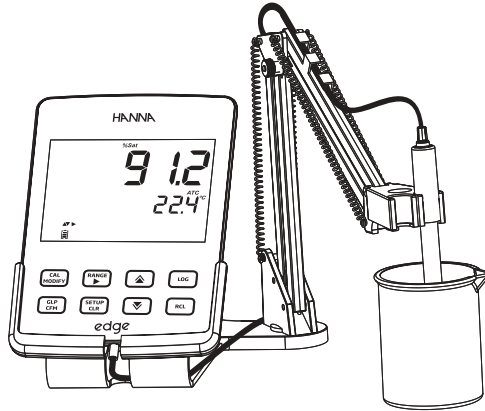
Bench Cradle Setup

Insert electrode holder arm into the post on the pivoting base.

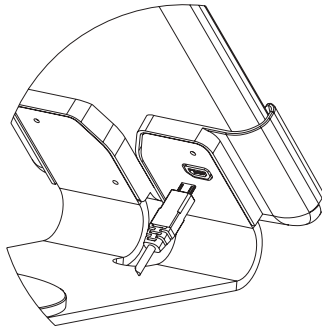
Connect the probe connector to the socket located at the bottom of the instrument.



Slide **edge**[®] into the cradle while positioning the probe cable behind the cradle. Put the probe/sensor into the electrode holder and secure cable in clips.

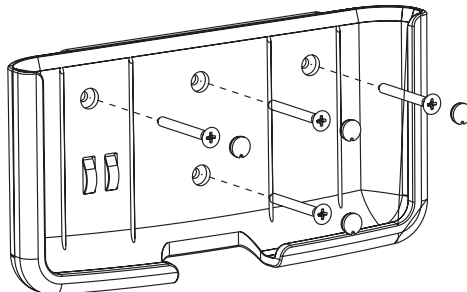


Connect the power adapter cable to the rear socket of the bench cradle. Connect the other end to the power adapter and plug into line power. Verify the battery icon indicates charging.

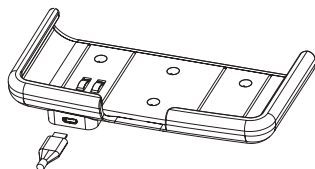


Wall Cradle Setup

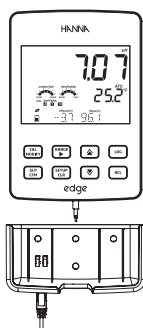
Choose suitable wall location. (Use 2.5 mm or US #3 bit). Fasten the wall cradle using the provided screws. Snap cover over screw heads.



Connect the power adapter cable to the bottom socket of the wall cradle. Connect the other end to the power adapter and plug into line power.



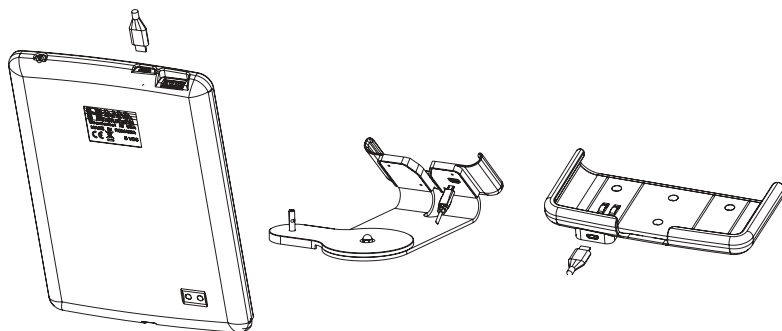
Connect the 3 mm probe jack to the socket located at the bottom of **edge**[®]. Slide **edge**[®] into the wall cradle. Verify the battery icon indicates charging.



Power Connection

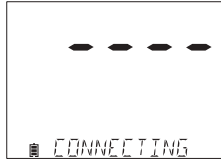
Alternatively to using the cradle for power, **edge**[®] can be powered by micro USB socket at the top. Plug the 5 VDC adapter into the power supply socket or by connecting directly to a PC.

Note: edge[®] is supplied with a rechargeable battery inside, which provides about 8 hours of continuous use. Whenever edge[®] is connected to the power adapter or to a PC, the battery is charging.

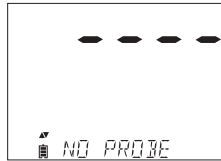


ELECTRODE & PROBE CONNECTIONS

Connect the 3 mm probe jack to the probe input located on the bottom of edge®. Make sure the probe is completely connected. If the probe is recognized, “CONNECTING” message is displayed along with sensor model.



If the probe is not connected or not recognized, “NO PROBE” message is displayed.



GENERAL SETUP

The following General Setup options are displayed regardless of the sensor being used. These settings remain when switching to another probe type or when no probe is attached. Options are tabulated in the table below with choices and default values. Options are accessed by pressing **SETUP/CLR** key. Loop through the options by using the **▲ ▼** keys. To modify a setting, press **CAL/MODIFY** key. The option may be modified by using **RANGE/▶**, **▲** and **▼** keys. Press **GLP/CFM** key to confirm the change. To exit SETUP press **SETUP/CLR** key.

Option	Description	Choices	Default	Basic mode (pH and EC)
*Only seen when cable connection between micro USB and PC is made.	Select if PC is being used for charging battery (and meter will be used for logging) or if Data will be exported to the PC.	LOG ON EDGE or EXPORT TO PC	LOG ON EDGE	Available
Log	Select log type to be used from 3 types of logging: Manual log on demand Manual log on stability (3 types of stability criteria available) Timed interval lot logging	Manual Log Stability Log: Fast, Medium, Accurate; Interval Log: Seconds: 5, 10, 30; Interval Log Minutes: 1, 2, 5, 15, 30, 60, 120, 180.	Interval (5 Sec)	Manual log or Stability log: Medium
Set Calibration Expiration Warning	Meter will indicate "CAL DUE" when set time in this parameter has been exceeded.	1, 2, 3, 4, 5, 6, 7 days or OFF	7 days	Not available
Probe Specific	Parameters that are specific to a measurement type are inserted here in the SETUP list.			
Set Date	Press CAL/MODIFY key to Set current date, displayed in ISO format. Press GLP/CFM key to save changes.	YYYY/MM/DD Date	Set date	Available
Set Time	Press CAL/MODIFY key to Set current time, displayed in ISO format. Press GLP/CFM key to save changes.	24 hr:MM:SS Time	Set time	Available

Option	Description	Choices	Default	Basic mode (pH and EC)
Set Auto Off	Used to save battery life by automatically turning off when no key press is detected for time set and meter is not in active logging or calibration mode.	5, 10, 30, 60 Min or Off	10 MIN	Available
Sound	If enabled, a short audible tone is produced for key stroke or calibration confirmation and a longer tone for wrong key.	On or Off	On	Available
Temperature Unit	Select degree Celsius or Fahrenheit scale for displayed and logged temperatures.	°C or °F	°C	Available
LCD Contrast	Permits modification of the display contrast for various lighting conditions.	1 to 8	3	Available
Flash Format* Only seen when log errors are present.	Permits formatting the flash drive.	On or Off	OFF	Available
Message Transition	User may choose how messages are displayed on third LCD line of display.	Word scroll messages or letter scroll messages	Letter scroll messages	Available
Reset Config To Default	Press the CAL/MODIFY key and GLP/CFM key (when prompted) to reset parameters.			Available: RESETS with Basic Mode OFF.
Instrument Firmware/Probe Firmware	Displays firmware version of meter. Using the RANGE/▶ key switches to Probe firmware (if connected) and diagnostic made for troubleshooting.	View only	Current firmware version.	Available
Meter ID/ Meter SN/ Probe SN	User ID and Serial Number of meter and probe (if connected). Use RANGE/▶ to change between the three parameters.	Meter ID is user selectable	0000/Serial Number	Available
CSV file separator	Used to separate columns in the CSV file..	Comma (,) or Semicolon (;)	Comma	Available

Note: Options that are seen under special conditions only.

BASIC MODE

edge[®] offers a basic operation mode that streamlines measurement configuration for pH and EC measurements and is useful for many routine applications. Basic pH SETUP reduces parameter selection to the basic set. The meter limits calibration to 5 standard pH buffers: pH 6.86, 7.01, 4.01, 9.18 and 10.01 buffers. All pH measurements will display, log and export with 0.01 pH resolution. Interval logging is also eliminated. Manual and Manual medium stability log on demand are still functional. pH CONDITION, RESPONSE graphs are not displayed, giving the display a “Basic” measurement screen with just pH data and temperature. Basic EC reduces specific EC SETUP parameters to 3. The meter defaults settings to common parameters and auto ranges measurements automatically. The Basic EC meter may be used for conductivity and TDS measurements (salinity is not available). Interval logging is also eliminated. Manual and Manual medium stability Log on demand are still functional.

LOGGING FUNCTION

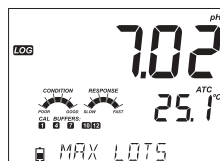
Note: If powering edge[®] through the micro USB connector to a PC, a SETUP option will require the choice “LOG ON EDGE” or “EXPORT TO PC”.

1000 log records can be stored into edge[®] memory. This memory is shared between all measurement types (pH, EC, DO) and all logging types (Manual, Manual Stability, Interval logs).

The maximum number of records for an Interval lot is 600 records (provided log space is available).

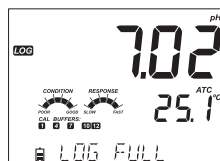
A record is a stored reading and a lot is a group of records.

Each time an Interval log is initiated, a new lot is created. The maximum number of Interval lots that may be stored is 100. If a 101st lot is attempted, “MAX LOTS” will be displayed. Some lots will need to be deleted. The lot numbering is up to 999 and restarts if all lot logs are deleted. All log on demand and stability log on demand are stored in a single lot. The maximum number of records that may be stored in a Manual or Stability lot is 200 records.



If the log memory is full during any logging session, the “LOG FULL” message will be displayed on the third LCD line for a brief moment and logging will cease. The display will return to the measurement screen.

Logging type is configured in SETUP.



Types of Logging

Interval logging: A continuous log recorded using a user-selected timed period. (This is not available in Basic mode).

Manual log on demand: Readings are logged each time **LOG** key is pressed. All of the records are stored in a single Manual lot for the measurement type. New records made on different days are stored in the same Manual lot.

Manual Stability log on demand: A log on demand that is made each time **LOG** key is pressed and the stability criteria is reached. Stability criteria may be set to Fast, Medium or Accurate settings.

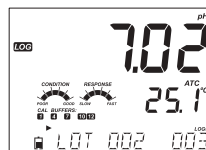
In Setup mode, choose log parameter, press **CAL/MODIFY** key then use the **RANGE/▶** key to select between Interval, Manual, or Stability. When Interval is displayed, use the **▲** and **▼** keys to select the setting for the timed interval. When Stability is displayed, use the **▲** and **▼** keys to select the measurement stability setting.

A complete set of GLP information including date, time, range selection, temperature reading, calibration information and probe serial number is stored with each log made.

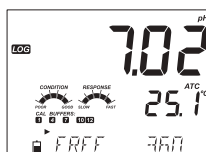
Interval Logging

Select Interval and sampling period in the SETUP menu (Not available in Basic mode). To start Interval logging, press the **LOG** key while the instrument is in measurement mode.

A "PLEASE WAIT" message will be displayed followed by the number of free spaces. During active interval logging, lot information is displayed on the third LCD line. The line indicates in which lot the data will be placed and keeps track of the number of logged records taken. The "LOG" tag is on continuously during active logging.

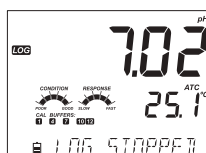


Pressing **RANGE/▶** during an interval log will display the number of logs available.



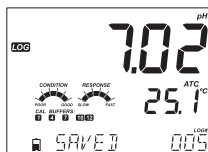
Pressing the **LOG** key again will stop the Interval logging session. The "LOG STOPPED" message will be displayed for a few seconds.

If a sensor failure occurs during interval logging, the message "OUT OF SPEC." will alternate with logging information.



Manual Logging

Select Manual in the SETUP menu. To initiate a Manual log, press the **LOG** key while the instrument is in measurement mode. The “PLEASE WAIT” screen will be displayed briefly followed by a screen indicating the measurement has been saved and then a screen indicating the log record number.



The “LOG” tag will be displayed on all 3 screens.

“PLEASE WAIT”

“SAVED” with the log record number

“FREE” with the number of free spaces available

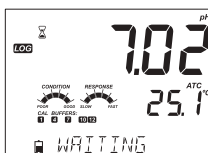


Stability Logging

Select Stability and choose measurement stability criteria in the SETUP menu. Only Stability Medium is available in Basic mode. To initiate the Stability log, press the **LOG** key while the instrument is in measurement mode.



The “PLEASE WAIT” screen will be displayed briefly followed by a screen showing the stability tag, “LOG” tag and a “WAITING” message. The log can be stopped while the “WAITING” message is displayed by pressing **LOG** key again.



When the stability selected criteria has been met, a “SAVED” message will be displayed followed by a screen indicating how much log space is available. The “LOG” tag will be displayed on all 4 screens.



“PLEASE WAIT”

“WAITING”

“SAVED” with the log record number

“FREE” with the number of free spaces available



VIEWING LOGGED DATA

All log records stored on **edge®** may be viewed on the meter by pressing the **RCL** key. The log records are grouped according to measurement (pH, EC, DO).

The parameter displayed first is based on the probe/sensor connected. The display also indicates the percentage of log memory used. Press **GLP/CFM** key to display those logs.



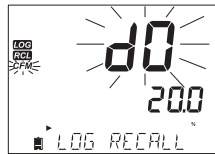
If no sensor or probe is connected, use the **RANGE/▶** key to select the desired measurement type. Press **GLP/CFM** key to display those logs.



Once a parameter is selected by pressing **GLP/CFM** key, use the **▲▼** keys to choose the type of logging records to view.

Choices are:

- Manual log on demand lot,
- Manual log on stability lot,
- Individual Interval logging lots.



If no data was logged for the selected measurement range, the instrument displays the following messages (ex. for pH range):

“NO MANUAL LOGS”

“NO STABILITY LOGS”



Press **GLP/CFM** key to enter inside lot information to view recorded data.

Use the **▲▼** keys to toggle between different records.

Use **RANGE/▶** to display GLP data including calibration information, date, time, etc.

Press **SETUP/CLR** key then **GLP/CFM** key when deleting records or lots.

Press **RCL** key to exit the logging type.

Press **RCL** key to exit the parameter selection screen.

Press **RCL** key to return to the measurement screen.

Delete Logging Type/Lot

Press **RCL** key and select the parameter log.

Use the **▲▼** keys to select the Manual/Stability records or Interval lots to delete. Press **SETUP/CLR** key. The instrument will display “CLEAR MANUAL” for Manual Records, “CLEAR STAB” for Stability Records.

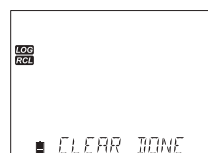


For Interval lots, the message “CLEAR”, followed by the selected lot will be displayed with “CFM” tag blinking.

Press the **▲▼** keys to select a different lot. Press **GLP/CFM** key. The instrument will display “PLEASE WAIT”.



“CLEAR DONE” is displayed for a few seconds after the selected Interval lot is deleted.



Delete Records (Manual and Stability log on demand)

To delete individual records (Manual and Stability logs only), enter Manual (Stability) log by pressing **GLP/CFM** key when Manual (Stability) is displayed. Use the **▲▼** keys to select the record to be deleted and then press **SETUP/CLR** key.

The instrument will display “CLEAR REC.” and record number along with “CFM” tag blinking.

Use the **▲▼** keys to select another record if necessary.



Press **GLP/CFM** key. The instrument will display “PLEASE WAIT” and then “CLEAR DONE” message. When individual logs are deleted within saved MANUAL or STABILITY logs, the logs will renumber, filling in the deleted data but staying in chronological order.

To delete all records of the MANUAL (STABILITY) log, proceed as described on page 21 for LOTS.

Select the Manual (Stability) lot and press **SETUP/CLR** key. The "CLEAR" message will be displayed along with "MANUAL" or "STABILITY" and "CFM" tag blinking on the LCD. Press the **GLP/CFM** key to confirm the deleting of the selected lot (MANUAL or STABILITY) or all records. Press **SETUP/CLR** key to exit without deleting.



The lot number is used to identify particular sets of data. The lot numbers are allocated successively until 100, even if some lots were deleted. The total number of lots that can be saved is 100. If some are deleted (for example 1-50), fifty additional logs may be stored. These will be numbered 101-150. The lots are allocated successively (provided available memory space) until 999 is reached. After this, it is necessary to delete all the LOT logs to start over the numbering.

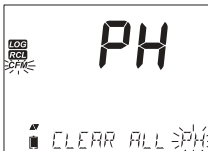
Delete All

All pH logs, (or all EC, all DO logs) can be deleted in a single clear. This function will delete all MANUAL, STABILITY and INTERVAL logs for the measurement type selected.

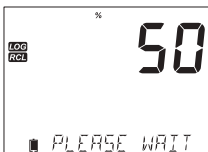
Press the **RCL** key. The pH, EC, or DO type will be blinking. Use **RANGE/▶** to select desired measurement parameter log data to delete.



While the measurement type is blinking and message states "LOG RECALL", press **SETUP/CLR** key. "CLEAR ALL" and measurement type will be displayed with "CFM" tag blinking. Press **GLP/CFM** key.



"PLEASE WAIT" and the percent cleared will be displayed until completed. The procedure can be repeated for the other measurement modes.



*Note: If **SETUP/CLR** key is pressed in error, press **SETUP/CLR** key again to exit without deleting.*



PC & STORAGE INTERFACE

Logged data on **edge®** can be transferred from the meter to a USB flash drive by using the log recall function. The minimum requirement for the drive is USB 2.0. Select the pH, EC or DO record you wish to export and follow the simple steps below.

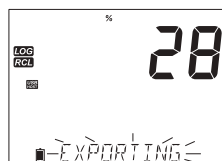
Connect USB flash drive to the USB port, located on the top of the meter. Press the **RCL** key and select the parameter to view (pH, EC, or DO). Press the **GLP/CFM** key. Select Manual, Stability, or interval lots by using the **▲▼** keys. Press the **LOG** key (not **GLP/CFM** key). The “USB HOST” tag should come on.



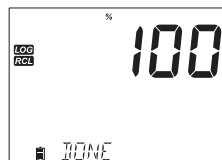
“PLEASE WAIT” message appears followed by “EXPORT”. Press **GLP/CFM** key to export the selected record or lot. If **GLP/CFM** key is not pressed in 10 seconds, the USB host will become inactive.



The meter will display the percentage of export.



The export percentage should go to 100%. Remove USB flash drive.



If the selected file is already saved on the flash drive, **edge®** will ask for confirmation of overwriting the existing file. The message “OVERWRITE” and “CFM” tag will blink. Press **GLP/CFM** key for overwriting the existing file or **CAL** to exit without exporting.



After exporting the display will return to the selected file. Press the **RCL** key twice to return to measurements.



Note: Do not remove USB flash drive during an active export transfer.

Logged data on the **edge**[®] can be transferred from the meter to a PC by following these simple directions. Suitable operating systems include Windows (XP minimum), OS X or Linux.

1. Connect **edge**[®] to the PC using the supplied micro USB cable.
2. Turn on **edge**[®].
3. Press **SETUP/CLR** key and select "LOG ON EDGE".
4. Press **CAL/MODIFY** key then use **▲▼** keys to change to "EXPORT TO USB".
5. Press **GLP/CFM** key and the USB/PC Tag is displayed.
6. Press **SETUP/CLR** key to exit.

The PC should detect the USB as a removable drive. Open the drive to view the stored files. Log files are formatted as Comma separated values (*.CSV) and can be opened with any text editor or spreadsheet program. (Note: Field separator may be set as comma or semicolon depending upon region preferences, see Setup.)

Note: Western Europe (ISO-88859-1) character set and English language are suggested settings. Other files may be visible depending upon computer settings. All files stored will appear in this folder.

Adjust Font or column width appropriately. Adjust the decimal places if the pH was logged with 0.001 resolution.

All conductivity measurements will be displayed as $\mu\text{S}/\text{cm}$.

Interval logs are designated as pH, EC or DO Lots. ie. PHLOT001, ECLOT002, DOLOT003.

The Manual Lots are PHLOTMAN, ECLOTMAN, and DOLOTMAN.

The Stability Lots are PHLOTSTA, ECLOTSTA, and DOLOTSTA. All stability logs, regardless of stability setting, are located in the same stability file for that measurement.

Click on the desired log to view data.

Note: If "° C !" appears in log data, the electrode/probe was used beyond it's operation specifications and the data is not considered reliable.

If "° C !!" appears in log data, the temperature sensor within the probe or electrode is broken and the device should be replaced. Logged data should not be considered reliable.

BASIC VS STANDARD pH MODE

For optimum pH measurements, follow these steps:

1. Understand the benefits and features of Standard and Basic Operation.
2. Set up **edge**[®] meter by configuring preferences.
3. Calibration.
4. Measurement.

The “Standard” pH operation includes up to a 5-point buffer calibration, use of custom buffers, choice of displaying 0.001 pH resolution, use of the full diagnostic features of Calibration Check™ (that includes buffers used, probe condition, response time and messages indicating a contaminated buffer or pH sensor requiring maintenance during calibration). Additional Sensor Check™ indicators are available if using **HI11311** or **HI12301** pH electrodes. These include a continuous diagnostic to detect if the electrode is broken and at the time of calibration, a diagnostic to indicate the reference junction has been compromised or fouled by sample contamination. The Standard pH operation also includes full logging capability including Interval, Manual log on demand and Manual log on stability.

“Basic” pH operation provides a simplified SETUP menu; there are no decisions to make regarding the pH measurement itself. The meter will display 0.01 pH resolution and permit a 3-point buffer calibration from the following pH buffers: pH 4.01, 6.86, 7.01, 9.18 or 10.01. Calibration Check™ and Sensor Check™ features are limited to messages during calibration. Calibration reminders are also not available. The GLP will still provide offset, slope, buffers used and a calibration date. The Basic pH operation includes Manual log on demand and Manual log on stability (medium setting).

Note: When changing from Standard to Basic operation in SETUP, previous calibration data will be cleared. A prompt will force the user to facilitate this.

Major differences between Standard and Basic modes are shown below.

	Standard	Basic*
Calibration	5 points including 2 custom buffers	3 points
Diagnostics	Cal Check™ Feature Sensor Check™ Feature Error messages GLP	Basic error messages GLP basic
Log types	Manual Log on demand Manual Log on stability (Fast, Medium, Accurate) Interval Logging	Manual Log on demand Manual Log on stability (Medium)
Recommended pH electrodes:	HI11310, HI12300 HI11311, HI12301 HI10530, HI10430	HI11310* HI12300

* All Sensors work in this mode, but diagnostic and all buffers will not be available.

pH METER CONFIGURATIONS

edge's pH meter operation is configured by using the **SETUP/CLR** key with a pH probe connected to the meter. The parameter-specific options will be seen inserted into the menu. If Basic mode is "On", the pH parameter list will not be displayed. See Basic mode for a description of this operation before choosing how to SETUP the meter.

Option	Description	Choices	Default	Basic mode
Basic Mode	When "On", a limited set of parameters and calibration buffers are available for use.	Off or On	Off	Available
Information	Visual indication of buffers used, Probe Condition and Response times are determined and displayed when calibration uses pH 7.01 and 4.01 and/or 10.01 buffers.	Off or On	On	Buffers used, probe conditions, and response times are not displayed.
First Custom Buffer	When "On", it permits the user to enter a custom pH buffer value to use during electrode calibration.	Off or value	Off	Not Available
Second Custom Buffer	When "On", it permits the user to enter a custom pH buffer value to use during electrode calibration.	Off or value	Off	Not Available
First Calibration Point	Allows the user to choose how the first point in calibration will be made.	Offset or point	Offset	Not Available (automatically uses Offset).
Resolution	Allows the user to select between 0.01 and 0.001 pH resolution.	0.01 or 0.001 pH	0.01 pH	Not Available (automatically uses 0.01 pH resolution).
Set Out Of Calibration Range	When set to "On", a measurement that is outside the calibrated range (buffers used) will trigger a warning message.	Off or On	On	Not Available, No Error messages displayed.

pH CALIBRATION

Calibration in Standard Mode

pH operation in standard mode offers full function of **edge®**. This includes seven standard buffers and two custom ones. Five pH buffers may be used for calibration.

The instrument should be recalibrated whenever:

- High accuracy and sensor verification are required.
- The pH electrode is replaced.
- At least once a week.
- After testing aggressive chemicals.
- If “CAL DUE” is displayed on the third LCD line.

Every time you calibrate the instrument use fresh buffers and perform electrode maintenance as required. It is advised to choose calibration buffers that bracket the sample pH.

Preparation

Pour small quantities of the buffer solutions into clean beakers. If possible, use plastic to minimize any EMC interferences. For accurate calibration and to minimize cross-contamination, use two beakers for each buffer solution; one for rinsing the electrode and one for calibration. If you are measuring in the acidic range, use pH 7.01 or 6.86 as the first buffer and pH 4.01 (or 3.00*) as the second buffer. If you are measuring in the alkaline range, use pH 7.01 or 6.86 as first buffer and pH 10.01 or 9.18 as the second buffer.

* pH 3.00 is only visible when using specific pH electrodes and will replace 4.01 pH buffer.

Procedure

Calibration can be performed using up to five calibration buffers. For accurate measurements, a minimum of a three-point calibration is recommended. The calibration buffer can be selected from the calibration buffer list that includes the custom buffers and the standard buffers:

pH 1.68, 4.01 (pH 3.00), 6.86, 7.01, 9.18, 10.01 and 12.45.

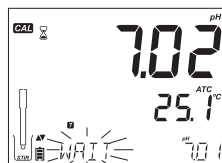
The custom buffers allow the user to calibrate in a buffer solution different from a standard one. Two custom buffers can be set in SETUP menu. See page 29 for more information about using custom buffers.

The instrument will automatically skip custom buffers which are in a ± 0.2 pH window of an already calibrated buffer.

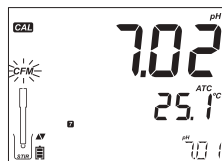
Submerge the pH electrode approximately 3 cm (1¼") into a buffer solution and stir gently. Press **CAL/MODIFY** key to enter calibration.

The "CAL" tag will appear and the "7.01" buffer will be displayed on the third LCD line.

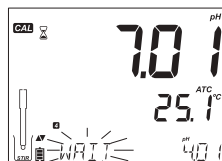
If necessary, press the \blacktriangle \blacktriangledown keys to select a different buffer value. The "⌘" along with "STIR" tag will be displayed and "WAIT" will blink on the LCD until the reading is stable.



When the reading is stable and close to the selected buffer, "CFM" tag will blink. Press **GLP/CFM** key to confirm calibration.



After confirming the first point, the calibrated value will be displayed on the first LCD line and the second expected buffer value on the third LCD line (i.e. pH 4.01).



Rinse and submerge the pH electrode approximately 3 cm (1¼") into the second buffer solution and stir gently. If necessary, press the \blacktriangle \blacktriangledown keys to select a different buffer value.

The "⌘" along with "STIR" tag will be displayed and "WAIT" will blink on the LCD until the reading is stable.

When the reading is stable and close to the selected buffer, "CFM" tag will blink. Press **GLP/CFM** key to confirm calibration.

Repeat procedure with additional pH buffers. A total of five pH buffers can be utilized.

After confirming the last desired buffer calibration points, press **CAL/MODIFY** key (or if all five buffer values were calibrated) the instrument will automatically display “SAVING” as it stores information. It will then return to normal measurement mode.



Each time a buffer is confirmed, the new calibration data replaces the old data for the corresponding buffer or for any buffer in the proximity of ± 0.2 pH. If current buffer has no previous data stored and the calibration is not full (five buffers), the current buffer is added to the existing calibration. If the existing calibration is full, the instrument asks which buffer to replace.



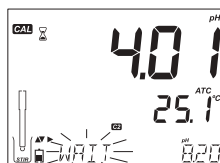
Press the **▲▼** keys to select another buffer to be replaced.
 Press **GLP/CFM** key to confirm the buffer that will be replaced.
 Press **CAL/MODIFY** key to leave calibration without replacing.

Note: If the replaced buffer is outside the ± 0.2 pH window of the calibrated buffers, it is possible to select this buffer during the next calibration.

Working With Custom Buffers

If a custom buffer was set in **SETUP** menu, it can be selected during calibration by pressing the **▲▼** keys. The “C1” or “C2” tag will be displayed once selected.

Press **RANGE/▶** key if you want to modify the custom buffer value. The buffer value will start blinking.



Use the **▲▼** keys to change the buffer value. After 5 seconds, the buffer value is updated. Press **RANGE/▶** key if you want to change it again.



Note: Custom buffer values can be adjusted ± 1.00 pH around the set value during calibration. When a custom buffer is displayed, the "C1" or "C2" tag is displayed.

First Calibration Point

When performing a new calibration, or adding to an existing one, the user has a choice of how the first new calibration point will be treated in reference to the existing calibration point. This is selected in SETUP by the option FIRST CALIBRATION POINT. The two SETUP selectable options are "POINT" or "OFFSET".

Point: A buffer value can be recalibrated and added to the previous calibration set. The electrode slope of the other calibration points will be reevaluated with the recalibrated buffer value.

Offset: The new buffer calibration point can create a constant offset to all existing pH calibration data (existing calibration must have a minimum of two pH buffers).

Recalibrating a pH sensor or adding to an existing calibration is simple and follows the PROCEDURE outlined on page 27.

Press **CAL/MODIFY** key. Place sensor in desired buffer and select buffer from choices. When sensor has equilibrated, the "CFM" tag will turn on and blink. Press the **GLP/CFM** key.

Press **CAL/MODIFY** key to escape the calibration. Alternately continue calibrating in additional buffers. The latest calibration point will be added to the existing data. GLP will reflect the latest calibration data. Older calibration buffers will be seen as blinking buffers.

Note: Each time a buffer is confirmed, the new calibration data replaces the old data for the corresponding buffer or for any buffer in the proximity of ± 0.2 pH. If the current buffer has no previous data stored and the calibration has not used five buffers, the current buffer is added to the existing calibration. If the existing calibration is full, the instrument asks which buffer to replace.

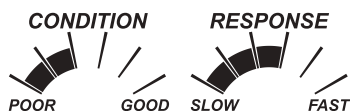
When using Standard mode, the user can choose if they want the display to show the CONDITION and RESPONSE gauges on the display. These are part of the Cal Check™ system and are selected in SETUP by the option INFORMATION. The choice is ON or OFF.



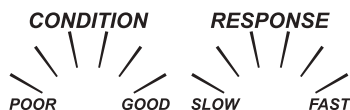
Electrode Condition and Electrode Response Time

edge® pH Calibration Check™ feature will assess electrode condition and response time during each calibration and display it for the rest of the day.

The condition gauge shows the electrode's condition that is based on the offset and slope characteristics of the pH electrode at the time of calibration. The response gauge is a function of the stabilization time between the first and second calibration buffers, when calibration is performed between a pair of pH 4.01, 7.01 or 10.01 buffers. These gauges reflect the electrode's performance and should be expected to slowly decrease over the life of the electrode .



If the instrument is not calibrated the calibration history has been deleted, or it has been calibrated only at one point, the electrode condition and the electrode response gauges will be empty.



For a continuous display of the electrode's condition and response, daily calibration is necessary. This information can also be viewed in the GLP data.

Junction Condition (HI11311 and HI12301 Only)

edge's pH Sensor Check™ feature assess the health of the pH electrode's reference junction during each calibration. The junction gauge may be viewed directly in GLP but will also blink a warning on the display if the junction is compromised (not 100%). Should this happen, the junction condition will appear on the display with the junction blinking. The Junction Condition is a function of the electrode's reference impedance which should be kept low. If the reference junction becomes fouled from a precipitate or coating, the impedance will rise and cause the pH measurement to drift. This diagnostic feature serves as a warning to clean the sensor.



Calibration in Basic Mode

Procedure

Basic mode operation permits up to three-point buffer calibration.

For accurate measurements, at least a two-point calibration is recommended. However, a single point calibration can also be used.

The calibration buffers can be selected from the calibration buffer list that includes the standard buffers, pH 4.01, 6.86, 7.01, 9.18 and 10.01.

Three-Point Calibration

Submerge the pH electrode approximately 3 cm (1¼") into a buffer solution and stir gently. Press **CAL/MODIFY** key. The "CAL" tag will appear and the "7.01" buffer will be displayed on the third LCD line. If necessary, press the ▲▼ keys to select a different buffer value.

The "∞" along with "STIR" tag will be displayed and "WAIT" will blink on the LCD until the reading is stable.

When the reading is stable and close to the selected buffer, the "CFM" tag will blink. Press **GLP/CFM** key to confirm calibration.

After confirming the first calibration point, the calibrated value will be displayed on the first LCD line and the second expected buffer value on the third LCD line. (i.e. pH 4.01)

Rinse and submerge the pH electrode approximately 3 cm (1¼") into the second buffer solution and stir gently.

If necessary, press the ▲▼ keys to select a different buffer value.

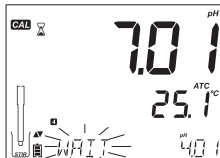
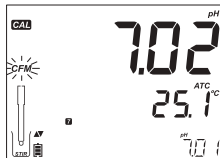
The "∞" along with "STIR" tag will be displayed and "WAIT" will blink on the LCD until the reading is stable. When the reading is stable and close to the selected buffer, the "CFM" tag will blink.

Press **GLP/CFM** key to confirm calibration.

The calibrated value is then displayed on the first LCD line and the third expected buffer value on the third LCD line.

After the second calibration point is confirmed, rinse and submerge the pH electrode approximately 3 cm (1¼") into the last buffer solution and stir gently.

If necessary, press the ▲▼ keys to select a different buffer value. The "∞" along with "STIR" tag will be displayed and "WAIT" will blink on the LCD until the reading is stable.



When the reading is stable and close to the selected buffer, the “CFM” tag will blink. Press **GLP/CFM** key to confirm calibration.

At the end of calibration the instrument displays “SAVING”, stores the calibration value and returns to normal measurement mode.

The calibration sequence may be reduced to two buffer values or a single one. Press **CAL/MODIFY** key to return to measurement mode after the desired number of buffers have been calibrated.

Note: When performing a new calibration or adding to an existing calibration the first calibration point will be treated as an offset. See page 30 for details.

Press CAL/MODIFY key after the first or second calibration point is confirmed and the instrument will store the calibration data. Then it will return to measurement mode.

If the value measured by the instrument is not close to the selected buffer, “WRONG BUFFER” will blink. Check if the correct buffer has been used or selected.

If the buffer temperature exceeds the temperature limits of the buffer, “WRONG BUFFER TEMPERATURE” will be displayed.

Press SETUP/CLR key after entering calibration to clear previous calibrations stored on probe. “CLEAR CALIBRATION” message will be displayed. Press GLP/CFM key. The instrument will return to measurement mode displaying the “CAL DUE” message.

If measured value differs more than expected “CHECK ELECTRODE CHECK BUFFER” will be displayed. Take appropriate action, cleaning the probe if necessary or refreshing the pH buffer.

pH Buffer Temperature Dependence

Calibration buffers are affected by temperature. During calibration with standard pH buffers (not Custom), the instrument will display the pH buffer value at 25 °C, however, it will use the appropriate value for that buffer at the temperature of the buffer for the calibration. Immediately after exiting calibration, the buffer will read its value at the temperature of measurement.

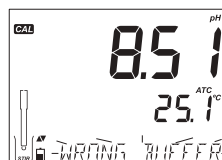
TEMP		pH BUFFERS							
°C	°F	1.679	3.000	4.010	6.862	7.010	9.177	10.010	12.454
0	32	1.670	3.072	4.007	6.982	7.130	9.459	10.316	13.379
5	41	1.670	3.051	4.002	6.949	7.098	9.391	10.245	13.178
10	50	1.671	3.033	4.000	6.921	7.070	9.328	10.180	12.985
15	59	1.673	3.019	4.001	6.897	7.046	9.273	10.118	12.799
20	68	1.675	3.008	4.004	6.878	7.027	9.222	10.062	12.621
25	77	1.679	3.000	4.010	6.862	7.010	9.177	10.010	12.450
30	86	1.683	2.995	4.017	6.851	6.998	9.137	9.962	12.286
35	95	1.688	2.991	4.026	6.842	6.989	9.108	9.919	12.128
40	104	1.693	2.990	4.037	6.837	6.983	9.069	9.881	11.978
45	113	1.700	2.990	4.049	6.834	6.979	9.040	9.847	11.834
50	122	1.707	2.991	4.062	6.834	6.978	9.014	9.817	11.697
55	131	1.715	2.993	4.076	6.836	6.979	8.990	9.793	11.566
60	140	1.724	2.995	4.091	6.839	6.982	8.969	9.773	11.442
65	149	1.734	2.998	4.107	6.844	6.987	8.948	9.757	11.323
70	158	1.744	3.000	4.123	6.850	6.993	8.929	9.746	11.211
75	167	1.755	3.002	4.139	6.857	7.001	8.910	9.740	11.104
80	176	1.767	3.003	4.156	6.865	7.010	8.891	9.738	11.003
85	185	1.780	3.002	4.172	6.873	7.019	8.871	9.740	10.908
90	194	1.793	3.000	4.187	6.880	7.029	8.851	9.748	10.819
95	203	1.807	2.996	4.202	6.888	7.040	8.829	9.759	10.734

CALIBRATION MESSAGES

The Calibration Check™ feature may flag diagnostic messages during a calibration. As electrode aging is normally a slow process, substantial changes from previous calibrations are likely due to a temporary problem with the probe or buffers that can be addressed easily. These messages are seen in Standard and Basic modes.

Wrong Buffer

This message appears when the difference between the pH reading and the value of the selected buffer is too great. If this error message is displayed, check if you have selected the proper calibration buffer and have poured the desired buffer.



Wrong Old Points Inconsistency

“WRONG OLD POINTS INCONSISTENCY” is displayed if the new calibration differs significantly from the last value of that probe in that buffer. In this case it may be best to clear the previous calibration and attempt a new calibration with fresh buffers.

To clear calibration information, press **CAL/MODIFY** key then press **SETUP/CLR** key. The “CLEAR CALIBRATION” message will be displayed. Either press the **GLP/CFM** key and clear all calibration information or press **CAL/MODIFY** key to exit. The probe may retain a single point calibration if first point was accepted.

Once calibration information is cleared, the message “CAL DUE” will be displayed

Clean Electrode

“CLEAN ELECTRODE” indicates poor electrode performance (offset out of accepted window, or slope under the accepted lower limit). Often, cleaning the probe will improve the pH electrodes response. See pH Electrode Conditioning and Maintenance for details. Repeat calibration after cleaning.

Check Electrode Check Buffer

“CHECK ELECTRODE CHECK BUFFER” appears when electrode slope exceeds the highest accepted slope limit. You should check your probe and use fresh buffer. Cleaning may also improve this response.

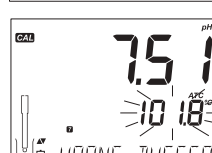
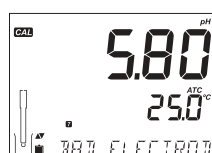
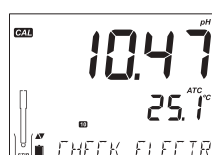
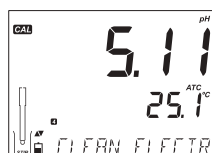
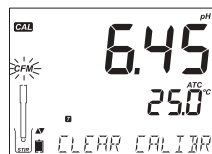
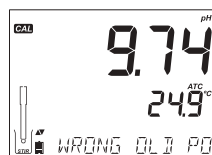
Bad Electrode

“BAD ELECTRODE” appears if the cleaning procedure performed as a result of the above two messages is found to be unsuccessful. In this case it is advised to replace the probe.

Wrong Buffer Temperature

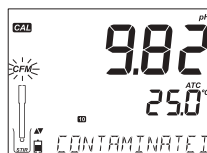
“WRONG BUFFER TEMPERATURE” appears if the temperature of the buffer is outside the defined buffer temperature range. The calibration buffers are affected by temperature changes in a defined manner. During calibration, the instrument will automatically calibrate to the pH value corresponding to the measured temperature but display it to the value at 25 °C. Immediately after calibration, the buffer should read the value of the buffer at the temperature of measurement.

Note: Temperature limits will be reduced to actual sensor specifications.



Contaminated Buffer

“CONTAMINATED BUFFER” appears in order to alert that the buffer could be contaminated. Refresh your buffer and continue the calibration procedure.



Broken Temperature Sensor

If the temperature sensor should malfunction or break at any time, a temperature of “25.0 °C” will blink on the second LCD line and the message “BROKEN TEMPERATURE SENSOR” will appear on the third LCD line after leaving calibration. The calibration will have the compensation at 25 °C. Replace probe if this occurs.



Note: If this occurs during logging “25° C !” will appear in the CSV file.

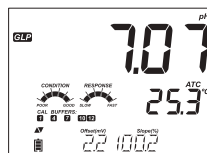
pH GLP INFORMATION

Good Laboratory Practice (GLP) refers to a quality control function used to ensure uniformity of sensor calibrations and measurements. The dedicated **GLP/CFM** key opens a file of the latest calibration information. Use the **▲▼** keys to scroll the stored information. This includes the buffers used, temperature of the buffer, time and date of the last calibration, the sensor serial number and the calculated offset and percent slope. This information is available in Basic and Standard Modes. This information is also included with every data log. Newest calibration points report as a solid number, older calibration data (that is still used) will be displayed blinking.

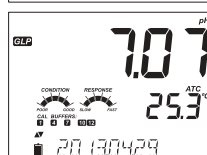
If calibration has not been performed, the instrument displays a blinking “NO CAL” message.



After the calibration has been performed the instrument displays offset and slope. The GLP slope is the average of the calibration slopes; the percentage is referenced to the ideal slope value at 25 °C. Additionally, the condition and response indicators displayed are from the last calibration.



Pressing the **▲▼** keys, the last calibration date (yyyy.mm.dd) together with the current reading is displayed.

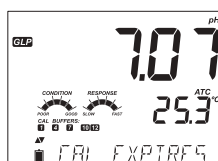


Note: If a custom buffer was used in calibration, the "C1" and "C2" tags will be displayed. If only the one custom buffer is used in calibration, the tag will be "C1" and the value will be displayed.

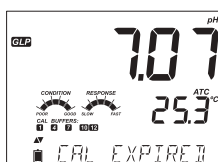
If disabled, "EXPIRATION WARNING DISABLED" is displayed.



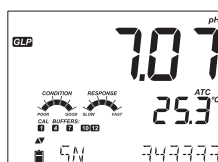
Or if enabled the number of days until the calibration alarm "CAL DUE" will be displayed. (i.e. "CAL EXPIRES IN 2 DAYS")



The number of days since the calibration expired. (i.e. "CAL EXPIRED 2 DAYS AGO")



The probe serial number together with the current reading.



If a buffer is not from the last calibration, the buffer tag will be displayed blinking.



In Standard Mode, Condition and Response gauges are visible on the day of calibration (See Electrode Condition And Electrode Response Time page 31). If configured in SETUP, a countdown message displays the number of days remaining until a new Calibration is due.

If using a [HI11311](#) or [HI12301](#) sensor, the glass impedance is continuously monitored, updated and reported here and the Junction Condition Gauge is fully visible.



pH MEASUREMENT

When an edge® pH probe is connected, the instrument will recognize it and the cap removal message will be displayed along with "PH". Press any key to skip the message. The instrument will enter measurement mode. Make sure the electrode has been calibrated before taking measurements.



Rinse the pH sensor with water and sample if possible. Submerge the electrode tip approximately 3 cm (1¼") into the sample to be tested and stir sample gently. Allow time for the electrode to stabilize.

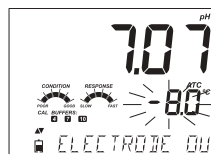


The pH is displayed on the first LCD line and the temperature on the second LCD line. Using the ▲▼ keys, date, time, battery status and offset with slope can be displayed on the third LCD line. If the reading is out of measurement range, the closest full scale value will be displayed blinking on the first LCD line.

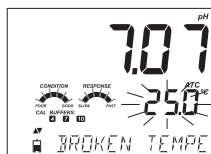
If measurements are taken successively in different samples, it is recommended to rinse the electrode thoroughly with deionized water or tap water and then with some of the next sample to prevent cross-contamination. The pH reading is affected by temperature. The temperature effect is compensated for using the temperature sensor inside the probe. The resulting measurement is the actual pH at the temperature of measurement.

Error Messages During Measurement

If the pH or temperature exceeds the limits of the sensor, the message "ELECTRODE OUT OF SPEC" will scroll on the third LCD line. The temperature will continue to be displayed. If temperature exceeds the meter specification of 120 °C, then "120 °C" will blink on the display. If interval logging, the message "OUT OF SPEC." will alternate with the LOG specific message. In both these cases the Log file will indicate a "°C!" next to the data.

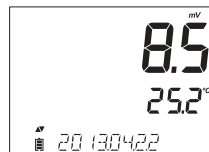


In case the temperature sensor is damaged, "BROKEN TEMPERATURE SENSOR" message will be displayed with "25.0 °C" blinking on the second LCD line. The Log file will indicate "°C!!" next to the data.



mV Reading Of The pH

The mV reading of the measured pH can be displayed on the LCD by pressing the **RANGE/▶** key.



Third Line Messages Displayed During Measurement

All the messages described in General Setup (page 15) are displayed in pH range.



Temperature Sensor Problem (if there is one)

Cal Due or Offset and Slope Value

Time

Date

Battery or Charge Status

Logging Messages

Out of Calibration Range

BASIC VS STANDARD EC MODE

Steps To Optimize EC Measurement

Follow these steps to optimize measurement using an EC probe:

1. Determine what measurement you wish to make with the EC probe. (See below)
2. Determine if Standard or Basic mode is best for your measurement.
3. Connect the Probe and configure your measurement using the SETUP menu.
4. Calibrate the EC probe.
5. Take measurements using an EC probe.

Measurements Available With The EC Probe

The four-ring EC probe may be used for 3 different measurement applications with **edge®**.

- It may be used for temperature compensated or absolute conductivity measurements (with units of $\mu\text{S}/\text{cm}$ or mS/cm).
- TDS (Total Dissolved Solids) measurements (a calculated measurement derived from the ionized particles in a sample and the conductivity measurement). This has measurement units of mg/L , ppm or g/L .
- Salinity (not available in basic mode): 3 different seawater salinity scales are supported; Practical Salinity (PSU), the Natural Seawater Scales (g/L), and the NaCl %.

The **RANGE/▶** key is used to change from conductivity to TDS (and to Salinity available in standard mode only).

Basic Versus Standard EC Mode

Standard operation mode allows complete configuration of all options for the measurement of Conductivity, TDS or Salinity measurements. Measurement data can be logged using Manual log on demand, Manual Log on Stability or Interval logs. All logged data can be exported to a thumb drive or PC. Basic operation mode is used for conductivity and TDS measurements. Common default values are used for Cell Factor (C.F.), temperature compensation coefficient and TDS conversion factor. Measurement units are user-selectable for TDS. The meter uses continuous auto-ranging to simplify the measurement experience.

	Standard	Basic
Measurement	Conductivity, TDS, Salinity	Conductivity, TDS
Set up Parameters	Fully selectable	Default values used
Log types	Manual Log on demand Manual Log on stability (Fast, Medium, Accurate) Interval Logging	Manual Log on demand Manual Log on stability (Medium)

EC METER CONFIGURATION

EC (Electrolytic Conductivity) meter operation is configured using the **SETUP/CLR** key with an EC probe connected to the meter. The EC-specific parameters will be seen inserted into the menu. If Basic mode is "On", the EC parameter list will be simplified, limiting the options the user can change. See Basic mode for a description of this operation before choosing how to **SETUP** the meter.

Option	Description	Choices	Default	Basic mode
Basic Mode		Off or On	Off	Available
Temperature Compensation	The user may select Automatic Temperature Compensation or No TC to configure absolute conductivity.	No TC or ATC	ATC	Not available. ATC is automatically used.
C.F (cm ⁻¹)	User may enter actual Cell factor value Manual calibration. (see page 42)	0.010 to 9.999 cm ⁻¹	1.000 cm ⁻¹	Not available. Automatically determined during calibration.
T.Coef. (%/°C)	This parameter is related to the solution being measured at temperatures other than 20 or 25 °C. It is used to correct measured conductivity to a reference temperature by applying a fixed factor for linear compensation.	0.00 to 6.00 (%/°C) Note: Setting to 0.00 is the same as using No TC.	1.90 (%/°C) Close for natural waters or salt solutions.	Not available. Automatically set to 1.90%/°C.
T.Ref. (°C)	The user may select either 20 °C or 25 °C reference temperature for temperature corrected conductivity.	20 °C or 25 °C	25 °C	Available
TDS Conversion Factor.	This factor is used to mathematically convert conductivity to a TDS value.	0.40 to 0.80	0.50	Not Available. Automatically set to 0.50.
View T.Ref. or T.Coef.	The user may choose whether to display the reference temperature (T.Ref) or the Temperature coefficient on the display with the measurement.	T.Ref.(°C) or T.Coef.(%/°C)	T.Ref (°C)	T.Ref (°C) automatically displayed during measurement.

Option	Description	Choices	Default	Basic mode
EC Range	If AUTO is used, edge® will automatically find the correct conductivity range and unit. If a fixed value is used, measurements made outside the ranges are considered Out of Range, but units will remain fixed throughout the measurement.	AUTO, 29.99 $\mu\text{S}/\text{cm}$, 299.9 $\mu\text{S}/\text{cm}$, 2999 $\mu\text{S}/\text{cm}$, 29.99 mS/cm , 200.0 mS/cm , 500.0 mS/cm	AUTO	Not available but measurement autoranges as needed.
TDS Range	If AUTO is used, edge® will automatically find the correct TDS measurement range and units. If a fixed value is used, measurements made outside the ranges are considered Out of Range, but units will remain fixed throughout the measurement.	AUTO, 14.99 mg/L , 149.9 mg/L , 1499 mg/L , 14.99 g/L , 100.0 g/L , 400 g/L	AUTO	Not available but measurement autoranges as needed.
TDS Unit	Select units of measurement for TDS measurement.	mg/L or ppm	ppm	Available to select.
EC Salinity Scale	Three measurement scales are available for salinity measurement in Seawater. (Practical Salinity Scale, Percent Scale and Natural Seawater Scale).	PSU, NaCl%, g/L	NaCl%	Not available.

Cell Factor (cm^{-1}) Manual Calibration

This option may be used to perform a manual calibration in a custom standard.

1. Rinse the probe with an aliquot of standard and shake off excess solution.
2. Place the probe in the standard. The sleeve holes must be covered with solution.
3. Press **SETUP/CLR** key and use the \blacktriangle \blacktriangledown keys to get to C.F. (cm^{-1})
4. Press **CAL/MODIFY** key.
5. Use the \blacktriangle \blacktriangledown keys to change C.F. (cm^{-1}) until the display reads the Custom Standard value.
6. Press **GLP/CFM** key. The message "MANUAL CALIBRATION CLEARS PREVIOUS CALIBRATIONS"

will be displayed on the third line LCD. “CAL” and “CFM” tags will blink. Press **GLP/CFM** key to confirm the manual calibration.

Note: GLP will display “Manual” for a standard. Using this calibration technique will erase any previous calibrations done in CAL. Log files will indicate “MANUAL” as standard.

User Selectable EC/TDS Range (Not Available In Basic Mode)

The EC and TDS measurements may be configured in SETUP as AUTO (meaning auto ranging, the measurement automatically finds the correct conductivity or TDS unit and resolution), or it may be configured with a user-selected measurement range and resolution (if you know ahead of time where your samples will fall). If AUTO is selected, the meter will select the scale with the highest possible resolution, but may change in the middle of a series of measurements changing units and displayed resolution.

Note: The selected range is only active during measurements. Auto ranging is used during calibration. If a fixed range is selected and during measurement goes beyond the range limits, the full scale value of that range will flash on the display. All log data in the CSV files will be displayed in $\mu\text{S}/\text{cm}$.

EC/TDS CALIBRATION

General Guidelines

Calibrate the instrument frequently, especially if high accuracy is required.

The instrument should be recalibrated:

- Whenever the EC probe is replaced.
- At least once a week.
- After testing aggressive chemicals.
- If “CAL DUE” is displayed on the third LCD line.

Every time you calibrate the instrument use fresh standard and perform electrode maintenance as required. It is recommended to choose a calibration standard that is close to the sample.

Preparation

Pour small quantities of the standard solutions into a beaker. If possible, use a plastic beaker to minimize any EMC interferences. For accurate calibration and to minimize cross-contamination, use two beakers for the standard solution; one for rinsing the probe and one for calibration.

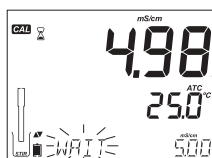
Procedure

Select standard to be used for calibration. 0.00 μS (probe in air) may be used for an offset calibration. This should be done first. Hanna Instruments Conductivity standards are available at 84 $\mu\text{S}/\text{cm}$, 1413 $\mu\text{S}/\text{cm}$, 5.00 mS/cm , 12.88 mS/cm , 80.0 mS/cm , 111.8 mS/cm and are used for the cell factor calibration.

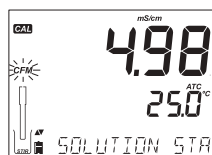
Rinse the probe with calibration solution or deionized water. Shake off excess solution. Submerge the probe in the calibration solution. The sleeve holes must be completely submersed. If possible, center the probe in the beaker away from the bottom or beaker walls.

Raise and lower the probe to refill the center cavity and tap the probe repeatedly to remove any air bubbles that may be trapped inside the sleeve.

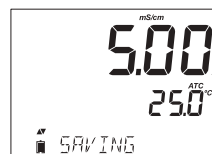
Press **CAL/MODIFY** key to enter calibration. The “CAL” tag and the recognized standard value will appear on the third LCD line. If necessary, press the \blacktriangle \blacktriangledown keys to select a different standard value. The “ ∞ ” along with “STIR” tag will be displayed and “WAIT” will blink on the LCD until the reading is stable.



When the reading is stable and close to the selected standard, “CFM” tag will blink, the message “SOL STD” and the value will be displayed.



Press **GLP/CFM** key to confirm calibration. The instrument displays “SAVING”, stores the calibration values and returns to measurement mode.



Conductivity vs Temperature Chart

The following table lists the temperature dependence of Hanna Instruments EC calibration standards. edge® uses these values and their temperature coefficients during calibration.

°C	°F	HI7030 HI8030 ($\mu\text{S/cm}$)	HI7031 HI8031 ($\mu\text{S/cm}$)	HI7033 HI8033 ($\mu\text{S/cm}$)	HI7034 HI8034 ($\mu\text{S/cm}$)	HI7035 HI8035 ($\mu\text{S/cm}$)	HI7039 HI8039 ($\mu\text{S/cm}$)
0	32	7150	776	64	48300	65400	2760
5	41	8220	896	65	53500	74100	3180
10	50	9330	1020	67	59600	83200	3615
15	59	10480	1147	68	65400	92500	4063
16	60.8	10720	1173	70	67200	94400	4155
17	62.6	10950	1199	71	68500	96300	4245
18	64.4	11190	1225	73	69800	98200	4337
19	66.2	11430	1251	74	71300	100200	4429
20	68	11670	1278	76	72400	102100	4523
21	69.8	11910	1305	78	74000	104000	4617
22	71.6	12150	1332	79	75200	105900	4711
23	73.4	12390	1359	81	76500	107900	4805
24	75.2	12640	1386	82	78300	109800	4902
25	77	12880	1413	84	80000	111800	5000
26	78.8	13130	1440	86	81300	113800	5096
27	80.6	13370	1467	87	83000	115700	5190
28	82.4	13620	1494	89	84900	117700	5286
29	84.2	13870	1521	90	86300	119700	5383
30	86	14120	1548	92	88200	121800	5479
31	87.8	14370	1575	94	90000	123900	5575

NaCl % CALIBRATION

Preparation

Pour a small quantity of the calibration solution into a beaker. If possible, use a plastic beaker to minimize any EMC interferences.

Before pressing **CAL/MODIFY** key verify in **SETUP**:

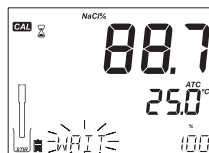
- Basic mode is off.
- Salinity Scale is set to NaCl%.

In measurement mode use the **RANGE/▶** key to select the Salinity measurement. The NaCl% tag will be on. NaCl calibration is a single point calibration at 100.0% NaCl. Use the **HI7037** calibration solution (sea water solution) as a 100% NaCl calibration solution.

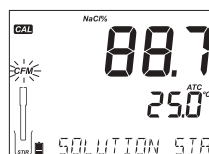
Procedure

Rinse the probe with some of the [HI7037](#) calibration solution or deionized water. Shake off excess solution. Submerge the probe in the calibration solution. The sleeve holes must be completely submersed. If possible, center the probe in the beaker away from the bottom or beaker walls. Raise and lower the probe to refill the center cavity and tap the probe repeatedly to remove any air bubbles that may be trapped inside the sleeve.

Press **CAL/MODIFY** key to enter calibration. The “⌚”, “STIR” and “CAL” tags will turn on and the first LCD line will display the percent NaCl reading, the second LCD line will display the temperature and the third LCD line will display “WAIT” message blinking until the reading is stable.



When the reading is stable and close to the standard, “CFM” tag will blink and “SOLUTION STANDARD” message will be displayed.



Press **GLP/CFM** key to confirm calibration.

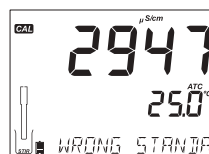
The instrument displays “SAVING”, stores the calibration values and returns to measurement mode.

Note: If a new EC calibration is performed, the NaCl calibration is automatically cleared. A new NaCl calibration is required.

CALIBRATION MESSAGES

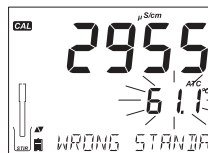
Wrong Standard

If the reading is too far from the expected value, the message “WRONG STANDARD” will scroll. Calibration cannot be confirmed. In this case check if the calibration solution has been used correctly or clean the probe by following the instructions for EC PROBE MAINTENANCE (see page 64).



Wrong Standard Temperature

If the temperature is out of the 0.0 to 60.0 °C range, “WRONG STANDARD TEMPERATURE” message will be displayed and the temperature value will blink.



EC/TDS GLP INFORMATION

GLP is a set of functions that allows storage and retrieval of data regarding the maintenance and status of the electrode. The following information can be viewed on the third LCD line during measurement: TEMPERATURE SENSOR problem (if there is one)

CAL DUE or CELL FACTOR

T.Coef. or T.Ref. (User selected)

TIME

DATE

RANGE

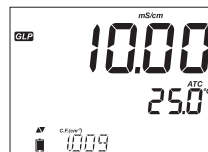
BATTERY or CHARGE STATUS

To view more information, enter GLP mode by pressing **GLP/CFM** key.

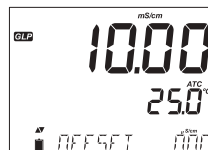
EC calibration data is stored automatically after a successful calibration.

To view the EC calibration data, press **GLP/CFM** key when the instrument is in EC measurement mode. The instrument will display the calibration standard and the temperature of the calibrated standard. Use the **▲▼** keys to scroll through the calibration data displayed on the third LCD line.

The cell factor in cm^{-1} determined from the calibration with the current reading.



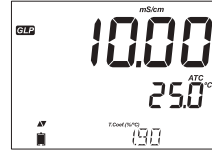
The calibration offset factor in $\mu\text{S}/\text{cm}$ together with the current reading.



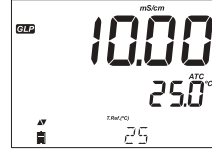
The Solution Standard and calibration temperature.



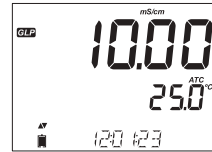
The temperature coefficient used during calibration with the current reading.



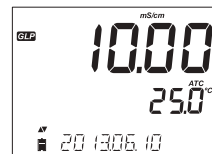
The reference temperature together with the current reading.



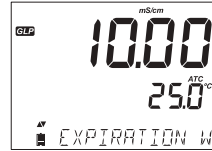
The time (hh:mm:ss) of the last calibration together with the current reading.



The date (yyyy.mm.dd) of the last calibration together with the current reading.



Calibration Expiration status together with the current reading:
If disabled, "EXPIRATION WARNING DISABLED" is displayed.



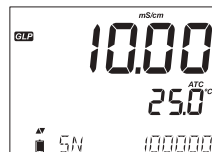
If enabled, the number of days until the calibration alarm "CAL DUE" will be displayed. (i.e. "CAL EXPIRES IN 2 DAYS")



If enabled, the number of days since the calibration expired. (I.E. "CAL EXPIRED 2 DAYS AGO").



The serial number of the probe together with the current reading.

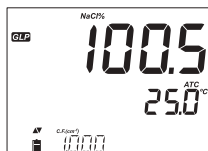


NaCl % GLP INFORMATION

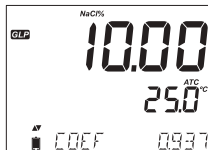
NaCl % Calibration Data in GLP

To view the NaCl% calibration data, press **GLP/CFM** key when the instrument is in NaCl% measurement mode. Use the **▲▼** keys to scroll through the calibration data. The instrument will display the calibration temperature and solution.

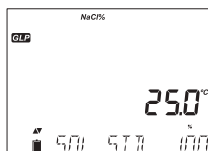
The cell factor in cm^{-1} determined from the calibration with the current reading.



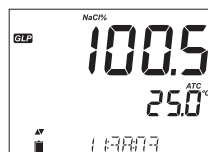
The salinity coefficient determined from the calibration together with the current reading.



The Solution Standard together with the calibrated temperature.



The time (hh:mm:ss) of the last calibration together with the current reading.



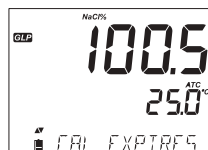
The date (yyyy.mm.dd) of the last calibration together with the current reading.



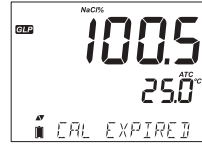
Calibration Expiration status together with the current reading:
If disabled, "EXPIRATION WARNING DISABLED" is displayed.



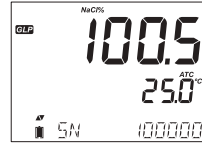
If enabled, the number of days until the calibration alarm "CAL DUE" will be displayed. (i.e. "CAL EXPIRES IN 2 DAYS")



If enabled, the number of days since the calibration expired.
(I.E. "CAL EXPIRED 2 DAYS AGO").



The serial number of the probe.



Note: Press GLP/CFM key at any moment and the instrument will return to measurement mode.

EC/TDS MEASUREMENTS

The **RANGE/▶** key will change measurement from conductivity to TDS to Salinity.

Conductivity Measurements

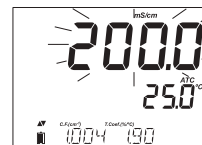
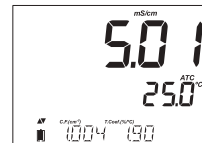
Connect the conductivity probe to the instrument and wait until probe parameters are loaded. When an **edge®** probe is connected, the instrument will recognize it.

Verify if the probe has been calibrated. Suspend the probe into the solution to be tested. The sleeve holes must be completely submersed. Tap the probe repeatedly to remove any air bubbles that may be trapped inside the sleeve.

The conductivity value will be displayed on the first LCD line, the temperature on the second LCD line and calibration or range specific information on the third LCD line.

To toggle between information displayed on the third LCD line, use the **▲▼** keys.

If the reading is out of range when the range is set to automatic, the full-scale value (200.0 mS/cm for ATC mode or 500.0 mS/cm for absolute conductivity) will be displayed blinking.



Note: Temperature-compensation and absolute conductivity (NoTC) are selected in the SETUP configuration.

Automatic Temperature Compensation (ATC): The conductivity probe has a built-in temperature sensor; the temperature value is used to automatically compensate the EC/TDS reading. When this option is selected, “ATC” tag is displayed. A temperature coefficient for the sample must also be set.

No Temperature Compensation (No TC): The temperature value is displayed, but not taken into account. When this option is selected, the “NoTC” tag will be displayed. The reading displayed on the primary LCD is the uncompensated EC or TDS value.

Note: The default compensation mode is ATC.

The compensation is referenced to the selected reference temperature (see SETUP for details).

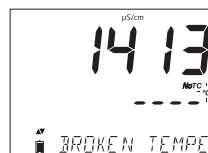
If temperature compensation is selected, measurements are compensated using the temperature coefficient (default value 1.90 %/°C, is recommended for natural water samples).

To change the temperature coefficient, enter the SETUP mode and select “T.Coef.(%/°C)” (see SETUP).

The current temperature coefficient can be viewed on the third LCD line by pressing the \blacktriangle \blacktriangledown keys until it is displayed. The value is displayed along with Cell Factor (the factor that is used to convert the measured conductance to conductivity, based on the geometry of the cell). If the temperature reading is out of range, the closest full scale value will be displayed with “°C” blinking on the second LCD line.

Error Messages During Measurement

If the EC temperature exceeds the limit of the probe, the message “PROBE OUT OF SPEC” will scroll on the third LCD line. The temperature will continue to be displayed blinking. If temperature exceeds the meter specification of 120 °C, then “120 °C” will blink on the display. If interval logging, the message “OUT OF SPEC.” will alternate with the Log specific messages in both of these cases. The Log file will indicate a “°C!” next to the data. In this case, the temperature sensor is damaged, “BROKEN TEMPERATURE SENSOR”, “---” along with NoTC tag will be displayed and the unit tag will blink on the LCD. If logging when this occurs, the Log file will indicate “°C!” next to the data. Absolute conductivity (NoTC) will be marked with an “A” in the CSV files and dashes will appear in the temperature field.



TDS Measurements

Press the **RANGE/▶** key. The instrument will switch to TDS measuring range. The TDS reading will be displayed on the first LCD line and the temperature reading on the second LCD line. If the reading is out of range, the full-scale value (100.0 g/L for ATC mode or 400.0 g/L for uncompensated TDS) will be displayed blinking along with a message on the display.



SALINITY MEASUREMENTS

Salinity Measurements (Not Available In Basic Mode)

Press the **RANGE/▶** key twice to switch from conductivity to the configured Salinity scale. Verify the desired scale is configured in SETUP. The meter supports three salinity scales: Practical Scale 1978, Percent Scale ‰, and Natural Sea Water 1966, [g/L]. (Information on the 3 scales follows)

Note: These are for determining salinity as they relate to general oceanographic use. Practical salinity and the Natural Seawater require a conductivity calibration. NaCl ‰ requires a calibration in HI7037 standard.

PSU - Practical Salinity Units

The practical salinity (S) of seawater relates the ratio of electrical conductivity of a normal seawater sample at 15 °C and 1 atmosphere to a potassium chloride solution (KCl) with a mass of 32.4356 g/Kg water at the same temperature and pressure.

Under these conditions the ratio is equal to 1, and S = 35. The practical salinity scale may be applied to values to through 42.00 PSU at temperatures between -2 to 35 °C.

According to the definition, salinity of a sample in PSU (practical salinity units) is calculated using the following formula:

$$R_T = \frac{C_T(\text{Sample})}{C(35;15) \cdot r_T}$$

$$r_T = 1.0031 \cdot 10^{-9}T^4 - 6.9698 \cdot 10^{-7}T^3 + 1.104259 \cdot 10^{-4}T^2 + 2.00564 \cdot 10^{-2}T + 6.766097 \cdot 10^{-1}$$

$$\text{Sal} = \sum_{k=0}^5 a_k \cdot R_T^k + f(t) \cdot \sum_{k=0}^5 b_k \cdot R_T^k - \frac{c_0}{1+1.5X+X^2} - \frac{c_1 f(t)}{1+Y+Y^2}$$

$$f(t) = \frac{T-15}{1+0.0162 \cdot (T-15)}$$

R_T - ratio of sample conductivity to standard conductivity at Temp = (T)

$C_T(\text{sample})$ - uncompensated conductivity at T °C;

$C(35,15) = 42.914 \mu\text{S}/\text{cm}$ - the corresponding conductivity of KCl solution containing a mass of 32.4356 g KCl/1 Kg solution

r_T - Temperature compensation polynomial

$a_0 = 0.008$	$b_0 = 0.0005$	$c_0 = 0.008$
$a_1 = -0.1692$	$b_1 = -0.0056$	$c_1 = 0.0005$
$a_2 = 25.3851$	$b_2 = -0.0066$	$X = 400R_T$
$a_3 = 14.0941$	$b_3 = -0.0375$	$Y = 100R_T$
$a_4 = -7.0261$	$b_4 = 0.0636$	
$a_5 = 2.7081$	$b_5 = -0.01442$	



$$f(t) = \frac{T-15}{1+0.0162 \cdot (t-15)}$$

NaCl % Percent Scale

The NaCl % scale is an older salinity scale used for seawater salinity. In this scale 100% salinity is equivalent to roughly 10% solids. High percentages were made by evaporation. To display NaCl in % units, enter SETUP and select NaCl% unit. Press the **RANGE/▶** key until “NaCl%” is displayed on the LCD. The instrument will display the NaCl% reading on the first LCD line and the temperature reading on the second LCD line.

If the reading is out of range, the full-scale value (400.0%) will be displayed blinking.



If this occurs during a log, a “!” will be placed next to the measurement unit. Data found in the CSV files with a “!” should not be considered reliable.

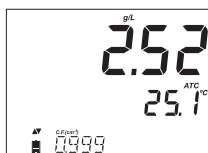
Natural Sea Water Scale

The Natural Sea Water Scale extends from 0.00 - 80.00 g/L. It determines salinity based upon a conductivity ratio of sample to “standard seawater” at 15 °C.

$$R_{15} = \frac{C_T(\text{Sample})}{C(35,15) \cdot r_T}$$

Where R_{15} is the conductivity ratio and salinity is defined by the following equation:

$$S = -0.08996 + 28.2929729R_{15} + 12.80832R_{15}^2 - 10.67869R_{15}^3 + 5.98624R_{15}^4 - 1.32311R_{15}^5$$



Note: The formula can be applied for temperatures between 10 °C and 31 °C.

If the reading is out of the measurement range, the display will flash the highest value possible and a warning message will be displayed. If this occurs during a log a “!” will be placed next to the measurement unit. Data found in the CSV file with a “!” should not be considered reliable.

DISSOLVED OXYGEN SETUP

Steps To Optimize

1. Determine if Concentration or % Saturated measurements will be made.
2. Prepare the Dissolved Oxygen (DO) probe for measurement.
3. Connect the probe to the meter and configure the SETUP parameters.
4. Calibrate the DO sensor.
5. Take measurements using the DO sensor.

Measurements Available

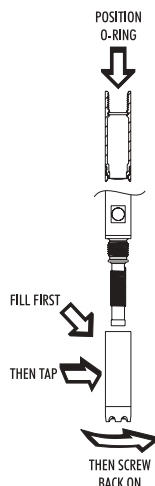
Concentration measurements in water, and % oxygen-saturated measurements are available using [edge®](#) together with [HI764080](#) DO probe. Algorithms used for concentration measurements (units of ppm or mg/L) are based upon the oxygen solubility in air-saturated fresh water. Compensation for salinity and altitude are made by configuring SETUP options. Percent saturation measurements are based upon the partial pressure of oxygen and are suitable for measurement in samples other than air-saturated fresh water. It is advised to check material compatibility of the probe with the sample.

DO Probe Preparation

CAUTION: Use care during servicing and use. The [HI764080](#) contains a glass insulator. Do not drop or handle carelessly.

Probes from Hanna Instruments are shipped dry.

1. Carefully remove the cardboard shipping tube used to protect the probe during shipping. Save the tube, should the probe be stored dry again.
2. Open membrane package and remove one O-Ring and one membrane cap.
3. Rinse the membrane cap with a small amount of [HI7041](#) electrolyte and discard.
4. Position the O-Ring in cap as indicated. Refill membrane cap $\frac{3}{4}$ full with electrolyte solution, ensure to cover the O-Ring.
5. Holding the membrane cap by the top, tap the side walls of the membrane cap to dislodge gas bubbles and force them to rise to the surface. Do not tap on the membrane directly as it may damage it.
6. With the probe facing down, slowly screw the cap counterclockwise until completely tightened. Electrolyte will overflow.
7. Rinse outer body of the probe and inspect membrane for entrapped gas bubbles. The cathode area should be free of bubbles.
8. Connect the DO probe to [edge®](#) meter and turn meter on.
9. Allow probe conditioning (polarizing) function to occur.



During this process, the following message will be displayed on the LCD, "DISSOLVED OXYGEN PROBE CONDITIONING".

The conditioning message will be displayed for about 60 seconds while the DO probe is conditioned. If the probe was conditioned and a new conditioning is not necessary, press any key to enter measurement mode.

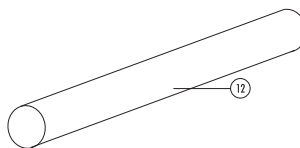
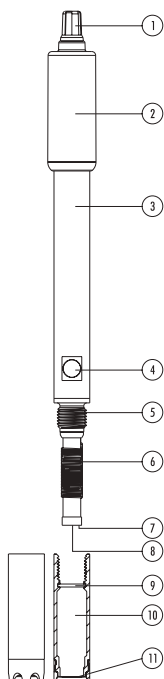


The probe is polarized with a fixed voltage of approximately 800 mV between the cathode and anode. Probe polarization is essential for stable measurements. With the probe properly polarized, oxygen is continually consumed as it passes through gas permeable PTFE membrane.

If polarization is interrupted, the electrolyte solution continues to be enriched with oxygen until it reaches an equilibrium with the surrounding solution. Whenever measurements are taken with a non-polarized probe, the measurement will be drifty and inaccurate. The measurement will jump when the probe is moved.

Note: When not in use and during polarization, use the protective transparent cap.

DISSOLVED OXYGEN PROBE DIAGRAM



1. Strain Relief
2. Probe Cap
3. PEI Probe Body
4. Temperature Sensor
5. Threads for Membrane Cap
6. Ag/AgCl Anode and Reference
7. Glass Insulator
8. Platinum Cathode
9. O-Ring
10. Disposable Membrane Cap
11. Oxygen Permeable PTFE Membrane
12. Shipping Tube

DISSOLVED OXYGEN METER CONFIGURATION

DO (Dissolved Oxygen) meter operation is configured using the **SETUP/CLR** key with a DO probe connected to the meter. The parameter-specific options will be seen inserted into the menu. There is no Basic mode for Dissolved Oxygen measurements.

Parameter	Description	Choices	Default
Altitude (m)	Concentration measurements of dissolved oxygen change depending on atmospheric pressure. A convenient way to estimate atmospheric pressure effects is by the related parameter of elevation (m) above or below sea level. Enter altitude in meters closest to the actual altitude to ensure the most accurate calibration and concentration measurement.	-500, -400, -300, -200, -100, 0, 100, 200, 300, 400, 500, 600, 700, 800, 900, 1000, 1100, 1200, 1300, 1400, 1500, 1600, 1700, 1800, 1900, 2000, 2100, 2200, 2300, 2400, 2500, 2600, 2700, 2800, 2900, 3000, 3100, 3200, 3300, 3400, 3500, 3600, 3700, 3800, 3900, 4000 m	0
Salinity (g/L)	Dissolved oxygen solubility decreases if water contains salts. Selecting this factor as to be close to your known salt level, will improve the accuracy of DO concentration calibration and measurement.	0, 1, 2, 3, 4, 5, 6, 7, 8, 9, 10, 11, 12, 13, 14, 15, 16, 17, 18, 19, 20, 21, 22, 23, 24, 25, 26, 27, 28, 29, 30, 31, 32, 33, 34, 35, 36, 37, 38, 39, 40 g/L	0
DO Units	Select preferred measurement units for DO concentration.	mg/L or ppm	ppm

Salinity and Altitude Compensation

Temperature, altitude and salinity compensation are used for DO concentration measurements (ppm or mg/L). When the water is colder, it can hold more dissolved oxygen, when it is warmer it holds less oxygen. Compensation for temperature-related solubility is done automatically using the built-in temperature sensor within the DO probe and algorithms in *edge*®.

When water is measured at an altitude below sea level, oxygen solubility increases, but above sea level the oxygen solubility decreases. To compensate for this during calibration and measurement, the user must provide the approximate altitude (in meters) in the SETUP menu.

The settings are in 100 m increments; select the value closest to the actual altitude. Some examples of altitudes around the world follow:

Location	Meter	Feet
Sebkha paki Tah, Morocco	-55	-180
Lake Frome, Australia	-6	-20
Netherlands, coastal providence	-1 to -7	-3 to -23
Lake Michigan, USA	176	577
Lake Geneva; France, Switzerland	372	1220
Denver, CO USA	1609	5279
Mount Everest	8848	29029

The solubility of oxygen in water is also influenced by the amount of salt the water contains. Seawater typically has a salinity of 35 g/L and the oxygen solubility is 18 % less compared to fresh water at 25 °C. By entering the approximate salinity value, the calibration and subsequent concentration measurement will be compensated to display the correct oxygen concentration. A 18 % error would result if the salinity value is not entered.

Note: Salinity and Altitude have no effect on % oxygen solubility range.

When water is fresh, containing no sea water, the concentration of oxygen will be at a maximum. The solubility of the oxygen dissolved in water is decreased when water is brackish or seawater. The solubility of oxygen in water is decreased when measurements are made at elevations above sea level.

DISSOLVED OXYGEN CALIBRATION

Before proceeding with the calibration, make sure the probe is ready for measurements (see page 54), i.e. the membrane cap is filled with electrolyte, the probe is connected to the meter and properly polarized. For an accurate calibration, it is recommended to wait at least 15 minutes to ensure conditioning of the probe. Keep the protective cap on during polarization time and remove it for calibration and measurements. Follow the calibration procedure. Calibrate the probe frequently, especially if high accuracy is required. The probe can be calibrated at 2 points: 100.0 % (slope calibration) and 0.0 % (zero calibration).

Initial Preparation

Prepare a fresh bottle of **HI7040** by following package directions. Use solution within one month of preparation. Pour small quantities of **HI7040** Zero Oxygen solution into a beaker. If used, remove the protective cap from the DO probe.

100% Saturated Calibration

It is suggested to perform the slope calibration in water-saturated air.

Pour water into a small beaker.

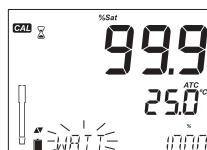
Rinse the polarized probe with clean water.

Dry the probe tip and allow a few seconds for the LCD reading to stabilize (probe in air).

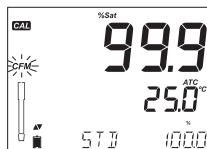
Suspend probe with membrane just over the beaker of water.

Press **CAL/MODIFY** key.

The “” tag will be displayed along with “WAIT” blinking on the LCD until the reading is stable.



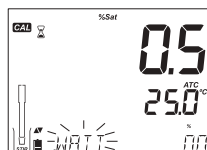
When the reading is stable and is within the limits, “CFM” tag starts blinking. Press **GLP/CFM** key to confirm the 100.0 % DO calibration.



Press **CAL/MODIFY** key to leave calibration after the first point. The instrument will display “SAVING” message and it will return to measurement mode memorizing the slope calibration data.

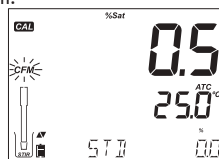
Zero Calibration

Press **CAL/MODIFY** key or continue with calibration after confirming first point. The meter will display “WAIT” and “0.0 %” will be displayed in lower right corner.



Submerge the probe membrane and temperature sensor into the beaker containing HI7040 Zero Oxygen solution and stir gently for 2-3 minutes, the reading will go down.

When the reading is stable and stops decreasing, “CFM” tag starts blinking. Press **GLP/CFM** key to confirm the 0.0 % DO calibration.



The instrument will display “SAVING” message and it will return to measurement mode. Rinse probe tip off in water before taking measurements in samples.

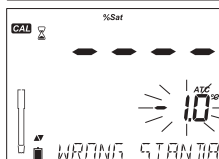


DISSOLVED OXYGEN CALIBRATION MESSAGES

If the reading is outside limits, “WRONG STANDARD” message will be displayed.



If the temperature is out of range (0.0 - 50.0 °C) during calibration, then the message “WRONG STANDARD TEMPERATURE” will be displayed and temperature value will blink.



DISSOLVED OXYGEN GLP INFORMATION

GLP refers to a quality control function used to ensure uniformity of probe calibrations and measurements. The dedicated **GLP/CFM** key opens a file of the latest calibration information. Use the **▲▼** keys to scroll the stored information. This includes the standards used, temperature of the standard, Altitude and Salinity factors, time and date of the last calibration, the expired calibration information and the probe serial number. This information is also included with all logged data.

Last DO Calibration Data

The last DO calibration data is stored automatically after a successful calibration. To view the DO calibration data, press **GLP/CFM** key when the instrument is in measurement mode.



The instrument will display:

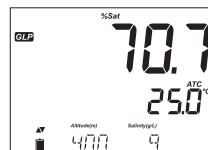
The calibration standard and the calibration temperature:

0.0 % will be displayed if the instrument was calibrated at this point.

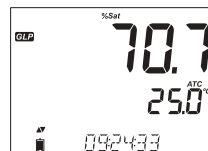
100 % calibration point, if instrument was calibrated in water-saturated air.



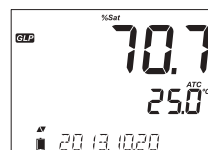
The altitude and salinity setting at the moment of calibration together with the current reading.



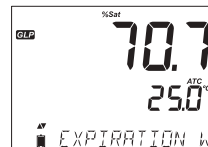
The time of day that the calibration was performed together with the current reading.



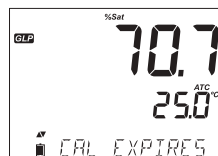
The date of the calibration together with the current reading.



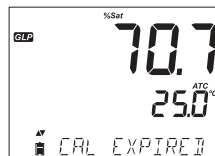
Calibration Expiration status together with the current reading: If disabled, "EXPIRATION WARNING DISABLED" is displayed.



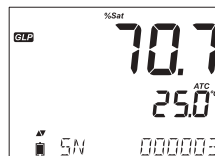
If enabled, the number of days until the calibration alarm "CAL DUE" will be displayed. (i.e. "CAL EXPIRES IN 2 DAYS")



If enabled, the number of days the calibration has expired (i.e. "CAL EXPIRED 2 DAYS AGO").



The probe serial number together with the current reading.



DISSOLVED OXYGEN MEASUREMENTS

Make sure that the probe is polarized, calibrated and the protective cap has been removed.

Rinse probe.

Submerge the probe in the sample to be tested, make sure temperature probe is also immersed. Allow reading to stabilize.

Note: The sample should be stirred when taking a reading.

The Dissolved Oxygen value (in %) is displayed on the first LCD line and the temperature on the secondary LCD line.

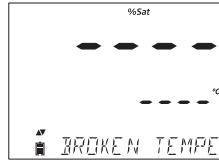


Press **RANGE/▶** to change the reading from % to ppm (mg/L) and vice versa.

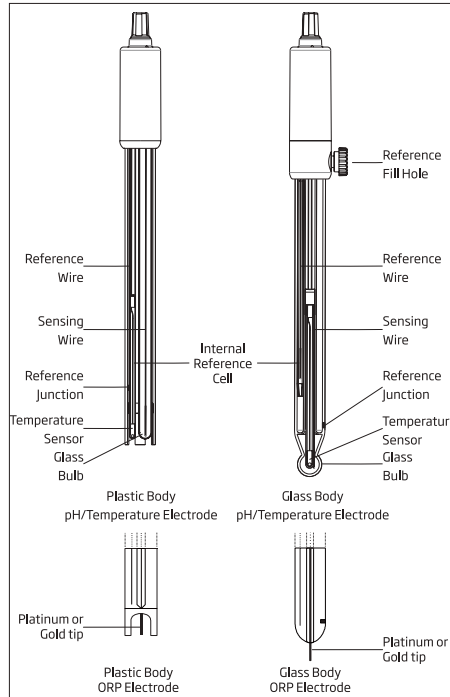


Oxygen is consumed during the measurement. For accurate DO measurements, water movement of 0.3 m/s is suggested. This is to ensure that the oxygen-depleted membrane surface is constantly measuring a representative sample. The use of a magnetic stirrer is recommended. The probe has a built-in temperature sensor. Make sure it is also in sample. The measured temperature is indicated on the second LCD line as shown above. Allow time for the probe to reach thermal equilibrium before taking any measurement. This can take several minutes. The greater the difference between the temperature at which the probe was stored and the temperature of the sample, the longer the time will be.

If the DO temperature exceeds the limits of the probe, the message "PROBE OUT OF SPEC" will scroll on the third LCD line and LCD will display dashes. If the temperature exceeds the meter specification 120 °C, then "120 °C" will blink on the display. If interval logging, the message "OUT OF SPEC." will alternate with the Log specific messages in both of these cases. The Log file will indicate "°C!" next to the data. In this case, the temperature sensor is damaged, "BROKEN TEMPERATURE SENSOR" will be displayed and the temperature will display "----" along with the unit tag blinking on the second LCD line. The Log file will indicate "°C!!" next to the data.



pH PROBE MAINTENANCE



Remove the protective cap of the pH electrode.
DO NOT BE ALARMED IF SALT DEPOSITS ARE PRESENT.
This is normal with electrodes. They will disappear when rinsed with water.

During transport, tiny bubbles of air may form inside the glass bulb affecting proper functioning of the electrode. These bubbles can be removed by “shaking down” the electrode as you would do with a glass thermometer. If the bulb and/or junction is dry, soak the electrode in HI70300 or HI80300 storage solution for at least one hour.

For refillable electrodes:

If the filling solution (electrolyte) is more than 2½ cm (1”) below the fill hole, add HI7082 or HI8082 3.5M KCl Electrolyte Solution for double junction electrodes.

Unscrew the fill hole cover during measurements so the liquid reference junction maintains an outward flow of electrolyte.

Measurement

Rinse the electrode tip with distilled water. Submerge the tip 3 cm (1¼”) in the sample and stir gently for a few seconds.

For a faster response and to avoid cross-contamination of the samples, rinse the electrode tip with a few drops of the solution to be tested, before taking measurements.

Storage Procedure

To minimize clogging and ensure a quick response time, the glass bulb and the junction should be kept moist and not allowed to dry out.

Replace the solution in the protective cap with a few drops of HI70300 or HI80300 Storage Solution or, in its absence, Filling Solution (HI7082 or HI8082 for double junction electrodes).

Follow the preparation procedure before taking measurements.

Note: NEVER STORE THE ELECTRODE IN DISTILLED OR DEIONIZED WATER.

Periodic Maintenance

Inspect the electrode and the cable. The cable used for connection to the instrument must be intact and there must be no points of broken insulation on the cable or cracks on the electrode stem or bulb. Connectors must be perfectly clean and dry. If any scratches or cracks are present, replace the electrode. Rinse off any salt deposits with water.

For refillable electrodes: Refill the reference chamber with fresh electrolyte (HI7082 or HI8082 for double junction electrodes). Allow the electrode to stand upright for 1 hour. Follow the Storage Procedure (page 63).

Cleaning Procedure

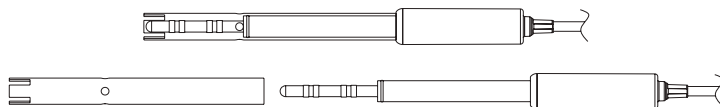
Use diagnostic messages to aid pH electrode troubleshooting. Several cleaning solutions are available:

- General — Soak in Hanna Instruments HI7061 or HI8061 General Cleaning Solution for approximately ½ hour.
- Protein — Soak in Hanna Instruments HI7073 or HI8073 Protein Cleaning Solution for 15 minutes.
- Inorganic — Soak in Hanna Instruments HI7074 Inorganic Cleaning Solution for 15 minutes.
- Oil/grease — Rinse with Hanna Instruments HI7077 or HI8077 Oil and Fat Cleaning Solution.

Note: After performing any of the cleaning procedures, rinse the electrode thoroughly with distilled water, refill the reference chamber with fresh electrolyte (not necessary for gel-filled electrodes) and soak the electrode in HI70300 or HI80300 Storage Solution for at least 1 hour before taking measurements.

EC PROBE MAINTENANCE

Rinse the probe with clean water after measurements. If a more thorough cleaning is required, remove the probe sleeve and clean the probe with a cloth or a nonabrasive detergent. Make sure to reinsert the sleeve onto the probe properly and in the right direction. After cleaning the probe, recalibrate the instrument.



The insulator used to support the platinum rings is made of glass. Use extreme caution when handling this probe.

DISSOLVED OXYGEN PROBE MAINTENANCE

The DO probe body is made of PEI.

A temperature sensor provides temperature measurements of the sample. Use the protective cap when the probe is not in use. To replace the membrane or refill with electrolyte, proceed as follows:

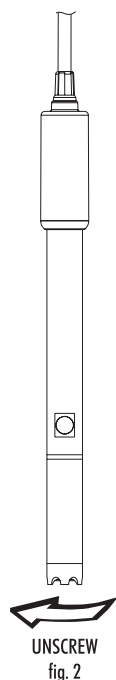
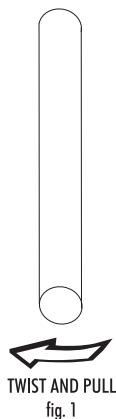
For a new probe, remove the protective shipping tube by gently twisting and pulling it off the body of the probe (see fig. 1).

If the membrane was previously installed, unscrew the membrane cap by turning it clockwise (see fig. 2).

The new membrane cap should be rinsed with electrolyte solution. Refill with clean electrolyte solution.

Gently tap the sides of the membrane cap to ensure that no air bubbles remain trapped. Do not tap the bottom directly with your finger, as this will damage the membrane.

Make sure that the rubber O-Ring sits properly inside the membrane cap. With the sensor facing down, slowly screw the membrane cap clockwise. Some electrolyte will overflow.



The platinum cathode (DO Probe Diagram, page 55) should always be bright and untarnished. If it is tarnished or stained, the cathode should be cleaned. You can use a clean lint-free cardboard or cloth. Rub the cathode very gently side to side 4-5 times.

This will be enough to polish and remove any stains without damaging the platinum tip. Afterwards, rinse the probe with deionized or distilled water and install a new membrane cap using fresh electrolyte and follow DO Probe Preparation page 54.

Important

In order to have accurate and stable measurements, it is important that the membrane surface is in perfect condition. This semipermeable membrane isolates the sensor elements from the environment but allows oxygen to enter. If any dirt is observed on the membrane, rinse carefully with distilled or deionized water. If imperfections still exist, or any damage is evident (such as wrinkles or tears-holes), the membrane should be replaced. Make sure that the O-Ring sits properly in the membrane cap.

TROUBLESHOOTING GUIDE

Symptoms	Problems	Solution
Slow response/excessive drift.	Dirty pH electrode.	Clean the electrode and then soak the tip in HI7061 or HI8061 for 30 minutes.
Readings fluctuate up and down (noise).	pH: Clogged/dirty junction. Low electrolyte level (refillable electrodes only).	Clean the electrode. Refill with fresh solution (for refillable electrodes only). Check cable and connectors.
	EC: EC probe sleeve not properly inserted; air bubbles inside sleeve.	Reinstall the sleeve. Tap the probe to remove air bubbles. Move to center of beaker. Verify top hole in sleeve is covered with solution.
	DO: DO probe electrolyte contains entrapped gas.	Remove cap. Refill, tap and reinstall.
The meter does not accept the buffer/standard solution for calibration.	pH: Dirty electrode or contaminated buffer.	Follow the cleaning procedure. If still no results, replace the electrode. Replace buffer.
	EC: The EC probe is defective.	Follow the cleaning procedure. If still no results replace the probe. Verify correct standard is selected.
If the display shows: "pH" and "-2.00" or "16.00" blinking.	Out of range in the pH scale.	A) Verify that the shipping cap has been removed. B) Make sure the pH sample is in the specified range. C) Check electrolyte level and general state of the electrode.
The display shows EC, TDS or Salinity readings blinking.	Out of range in EC, TDS or Salinity scale.	Verify the plastic shipping spacer has been removed from probe. Recalibrate the probe. Make sure the solution is in specified range. Make sure the range is not locked. (Select Auto range)
The display shows DO reading blinking.	Out of range in DO scale.	Verify area of cathode is free of bubbles inside cap. Verify solution movement past membrane. Remove cap, inspect and clean if necessary. Install new cap, fresh electrolyte with no bubbles, permit longer polarization. Stir or increase flow rate.

Symptoms	Problems	Solution
If the display shows: “mV” and “-1000” or “1000” blinking.	Out of range in the mV scale.	A) Verify the shipping cap has been removed. B) Make sure the sample pH is within specified range. C) Verify electrolyte level in pH sensor is topped off. D) Verify no bubbles inside pH membrane.
The meter does not measure temperature. “-- --” is displayed on second LCD line.	Broken temperature sensor.	Replace the probe.
The meter fails to calibrate NaCl.	Incorrect EC calibration.	Recalibrate the meter in EC range. Set cell constant to 1.
The meter fails to calibrate or gives faulty readings.	Broken pH electrode.	Replace the electrode.
At startup the meter displays all LCD tags permanently.	One of the keys is stuck.	Check the keyboard or contact your local Hanna Instruments Office.
CAL “Prod” message at startup.	Instrument was not factory calibrated or lost factory calibration.	Contact your local Hanna Instruments Office for help.

	pH	Temperature	
Range	-2.00 to 16.00 pH -2.000 to 16.000 pH* ±1000.0 mV	-20.0 to 120.0 °C (-4.0 to 248.0 °F)**	
Resolution	0.01 pH 0.001 pH* 0.1 mV	0.1 °C	
Accuracy @ 25 °C / 77 °F	±0.01 pH ±0.002 pH* ±0.2 mV	±0.5 °C	
pH Calibration	Automatic, up to 3 points (5 points*) calibration, 5 standard (7 standard*) buffers available (pH 1.68*, 4.01 or 3.00, 6.86, 7.01, 9.18, 10.01, 12.45*) and 2 custom buffers*		
Temperature compensation	Automatic -5.0 to 100.0 °C (23.0 to 212.0 °F) (using integral temperature sensor)		
pH Electrode	HI11310 digital pH/temperature electrode		
Log feature	Up to 1000* records organized in: Log on demand (Max. 200 logs) Log on stability (Max. 200 logs) Interval logging*		
	EC	TDS	Salinity
Range	0.00 to 29.99 $\mu\text{S}/\text{cm}$, 30.0 to 299.9 $\mu\text{S}/\text{cm}$, 300 to 2999 $\mu\text{S}/\text{cm}$, 3.00 to 29.99 mS/cm , 30.0 to 200.0 mS/cm , up to 500.0 mS/cm , absolute conductivity ‡	0.00 to 14.99 ppm (mg/L), 15.0 to 149.9 ppm (mg/L), 150 to 1499 ppm (mg/L), 1.50 to 14.99 g/L, 15.0 to 100.0 g/L, up to 400.0 g/L absolute TDS ‡ (with 0.80 factor)	0.0 to 400.0 %NaCl*, 2.00 to 42.00 PSU*, 0.00 to 80.00 g/L*
Resolution	0.01 $\mu\text{S}/\text{cm}$, 0.1 $\mu\text{S}/\text{cm}$, 1 $\mu\text{S}/\text{cm}$, 0.01 mS/cm , 0.1 mS/cm	0.01 ppm, 0.1 ppm, 1 ppm, 0.01 g/L, 0.1 g/L	0.1% NaCl, 0.01 PSU, 0.01 g/L
Accuracy @ 25 °C / 77 °F	±1% of reading (±0.05 $\mu\text{S}/\text{cm}$ or 1 digit, whichever is greater)	±1% of reading (±0.03 ppm or 1 digit, whichever is greater)	±1% of reading
EC Calibration	1 Cell Factor calibration; 6 standards available: 84 $\mu\text{S}/\text{cm}$, 1413 $\mu\text{S}/\text{cm}$, 5.00 mS/cm , 12.88 mS/cm , 80.0 mS/cm , 111.8 mS/cm , 1 point offset: 0.00 $\mu\text{S}/\text{cm}$		

	EC	TDS	Salinity
Salinity Calibration %NaCl (only)	Single point with HI7037 Standard		
Temperature compensation	Automatic -5 to 100 °C (23 to 212 °F) NoTC - can be selected to measure absolute conductivity.		
Conductivity temperature coefficient	0.00 to 6.00 %/°C (for EC and TDS only). Default value is 1.90 %/°C		
TDS factor	0.40 to 0.80 (default value is 0.50)		
EC Probe	HI763100 digital four-ring conductivity probe		
Log feature	Up to 1000 * (400) records organized in: Manual log on demand (Max. 200 logs), Manual log on stability (Max. 200 logs), Interval logging * (Max. 600 logs; 100 lots)		
DO			
Range	0.00 to 45.00 ppm (mg/L) 0.0 to 300.0% 0.0 to 50.0 °C (32.0 to 122.0 °F)**		
Resolution	0.01 ppm (mg/L) 0.1% 0.1 °C		
Accuracy @ 25 °C / 77 °F	±1.5% of reading ±1 digit ±0.5 °C		
DO Calibration	One or two points at 0% (HI7040) and 100% (water saturated air)		
Altitude Compensation Resolution	-500 to 4,000 m (-1640 to 13120') 100 m (328')		
Salinity Compensation Resolution	0 to 40 g/L 1 g/L		
Temperature Compensation	0.0 to 50.0 °C (32.0 to 122 °F)		
DO Probe	HI764080 digital dissolved oxygen electrode		
Log Feature	Up to 1000 records organized in Manual Log on Demand (Max. 200 logs) Manual Log on Stability (Max. 200 logs) Interval Logging (Max 600 logs, 100 lots)		

Additional Specifications	
PC Interface	Micro USB
Storage Interface	USB
Power Supply	5 VDC Adapter (included)
Environment	0-50 °C (32-122 °F) Max 95% RH non-condensing
Dimensions	202 x 140 x 12 mm (7.9 x 5.5 x 0.5")
Weight	250g (8.82 oz)

*Standard Mode Only

** Temperature limits will be reduced to actual probe/sensor limits.

‡Absolute conductivity (or TDS) is the conductivity (or TDS) value without temperature compensation.

Electrodes/Probes

HI10530	Triple ceramic, double junction, glass body, refillable pH electrode with conical tip and temperature sensor
HI10430	Triple ceramic, double junction, glass body, refillable pH electrode with temperature sensor
HI11310	Glass body, double junction, refillable pH/temperature electrode
HI11311	Glass body, double junction, refillable pH/temperature electrode with enhanced diagnostics
HI12300	Plastic body, double junction, gel filled, non refillable pH/temperature electrode
HI12301	Plastic body, double junction, gel filled, non refillable pH/temperature electrode with enhanced diagnostics
HI763100	EC/temperature probe
HI764080	DO/temperature probe

pH**BUFFER SOLUTIONS**

HI70004P	pH 4.01 Buffer Sachets, 20 mL (25 pcs.)
HI70007P	pH 7.01 Buffer Sachets, 20 mL (25 pcs.)
HI70010P	pH 10.01 Buffer Sachets, 20 mL (25 pcs.)
HI7001L	pH 1.68 Buffer Solution, 500 mL
HI7004L	pH 4.01 Buffer Solution, 500 mL
HI7006L	pH 6.86 Buffer Solution, 500 mL
HI7007L	pH 7.01 Buffer Solution, 500 mL
HI7009L	pH 9.18 Buffer Solution, 500 mL
HI7010L	pH 10.01 Buffer Solution, 500 mL
HI8004L	pH 4.01 Buffer Solution in FDA approved bottle, 500 mL
HI8006L	pH 6.86 Buffer Solution in FDA approved bottle, 500 mL
HI8007L	pH 7.01 Buffer Solution in FDA approved bottle, 500 mL
HI8009L	pH 9.18 Buffer Solution in FDA approved bottle, 500 mL
HI8010L	pH 10.01 Buffer Solution in FDA approved bottle, 500 mL

ELECTRODE STORAGE SOLUTIONS

HI70300L	Storage Solution, 500 mL
HI80300L	Storage Solution in FDA approved bottle, 500 mL

ELECTRODE CLEANING SOLUTIONS

HI70000P	Electrode Rinse Sachets, 20 mL (25 pcs.)
HI7061L	General Cleaning Solution, 500 mL
HI7073L	Protein Cleaning Solution, 500 mL
HI7074L	Inorganic Cleaning Solution, 500 mL
HI7077L	Oil & Fat Cleaning Solution, 500 mL
HI8061L	General Cleaning Solution in FDA approved bottle, 500 mL
HI8073L	Protein Cleaning Solution in FDA approved bottle, 500 mL
HI8077L	Oil & Fat Cleaning Solution in FDA approved bottle, 500 mL

ELECTRODE REFILL ELECTROLYTE SOLUTIONS

HI7082	3.5M KCl Electrolyte, 4x30 mL, for double junction electrodes
HI8082	3.5M KCl Electrolyte in FDA approved bottle, 4x30 mL, for double junction electrodes.

EC**CONDUCTIVITY SOLUTIONS**

HI70030P	12880 $\mu\text{S}/\text{cm}$, 20 mL sachets (25 pcs.)
HI70031P	1413 $\mu\text{S}/\text{cm}$, 20 mL sachets (25 pcs.)
HI70039P	5000 $\mu\text{S}/\text{cm}$, 20 mL sachets (25 pcs.)
HI7030M	12880 $\mu\text{S}/\text{cm}$, 230 mL bottle
HI7031M	1413 $\mu\text{S}/\text{cm}$, 230 mL bottle
HI7033M	84 $\mu\text{S}/\text{cm}$, 230 mL bottle
HI7034M	80000 $\mu\text{S}/\text{cm}$, 230 mL bottle
HI7035M	111800 $\mu\text{S}/\text{cm}$, 230 mL bottle
HI7039M	5000 $\mu\text{S}/\text{cm}$, 230 mL bottle
HI7030L	12880 $\mu\text{S}/\text{cm}$, 500 mL bottle
HI7031L	1413 $\mu\text{S}/\text{cm}$, 500 mL bottle
HI7033L	84 $\mu\text{S}/\text{cm}$, 500 mL bottle
HI7034L	80000 $\mu\text{S}/\text{cm}$, 500 mL bottle
HI7035L	111800 $\mu\text{S}/\text{cm}$, 500 mL bottle
HI7039L	5000 $\mu\text{S}/\text{cm}$, 500 mL bottle
HI7037L	100% NaCl sea water standard solution, 500 mL bottle

HI8030L	12880 $\mu\text{S}/\text{cm}$, 500 mL FDA approved bottle
HI8031L	1413 $\mu\text{S}/\text{cm}$, 500 mL FDA approved bottle
HI8033L	84 $\mu\text{S}/\text{cm}$, 500 mL FDA approved bottle
HI8034L	80000 $\mu\text{S}/\text{cm}$, 500 mL FDA approved bottle
HI8035L	111800 $\mu\text{S}/\text{cm}$, 500 mL FDA approved bottle
HI8039L	5000 $\mu\text{S}/\text{cm}$, 500 mL FDA approved bottle

DO

HI7040L	Zero Oxygen Solution
HI7041S	Refilling Electrolyte Solution, 30 mL
HI764080A/P	5 spare membranes

Other Accessories

HI75110/220U	Voltage adapter from 115 Vac to 5 Vdc (USA plug)
HI75110/220E	Voltage adapter from 230 Vac to 5 Vdc (European plug)
HI76404B	Electrode holder
HI2000WC	Wall cradle
HI2000BC	Bench cradle

Warranty

The edge® is warranted for two years against defects in workmanship and materials when used for their intended purpose and maintained according to instructions. Electrodes and probes are warranted for six months. This warranty is limited to repair or replacement free of charge.

Damage due to accidents, misuse, tampering or lack of prescribed maintenance is not covered.

If service is required, contact your local Hanna Instruments Office. If under warranty, report the model number, date of purchase, serial number and the nature of the problem. If the repair is not covered by the warranty, you will be notified of the charges incurred. If the instrument is to be returned to Hanna Instruments, first obtain a Returned Goods Authorization (RGA) number from the Technical Service department and then send it with shipping costs prepaid. When shipping any instrument, make sure it is properly packed for complete protection.

Hanna Instruments reserves the right to modify the design, construction or appearance of its products without advance notice.

World Headquarters

Hanna Instruments Inc.
Highland Industrial Park
584 Park East Drive
Woonsocket, RI 02895 USA
www.hannainst.com

Local Office

Hanna Instruments USA
270 George Washington Highway
Smithfield, RI 02917
Phone: 800.426.6287
Fax: 401.765.7575
e-mail: tech@hannainst.com



MANEDGE

Printed in ROMANIA